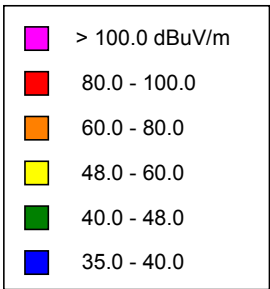
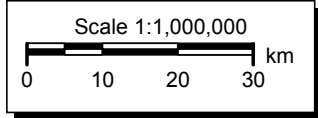
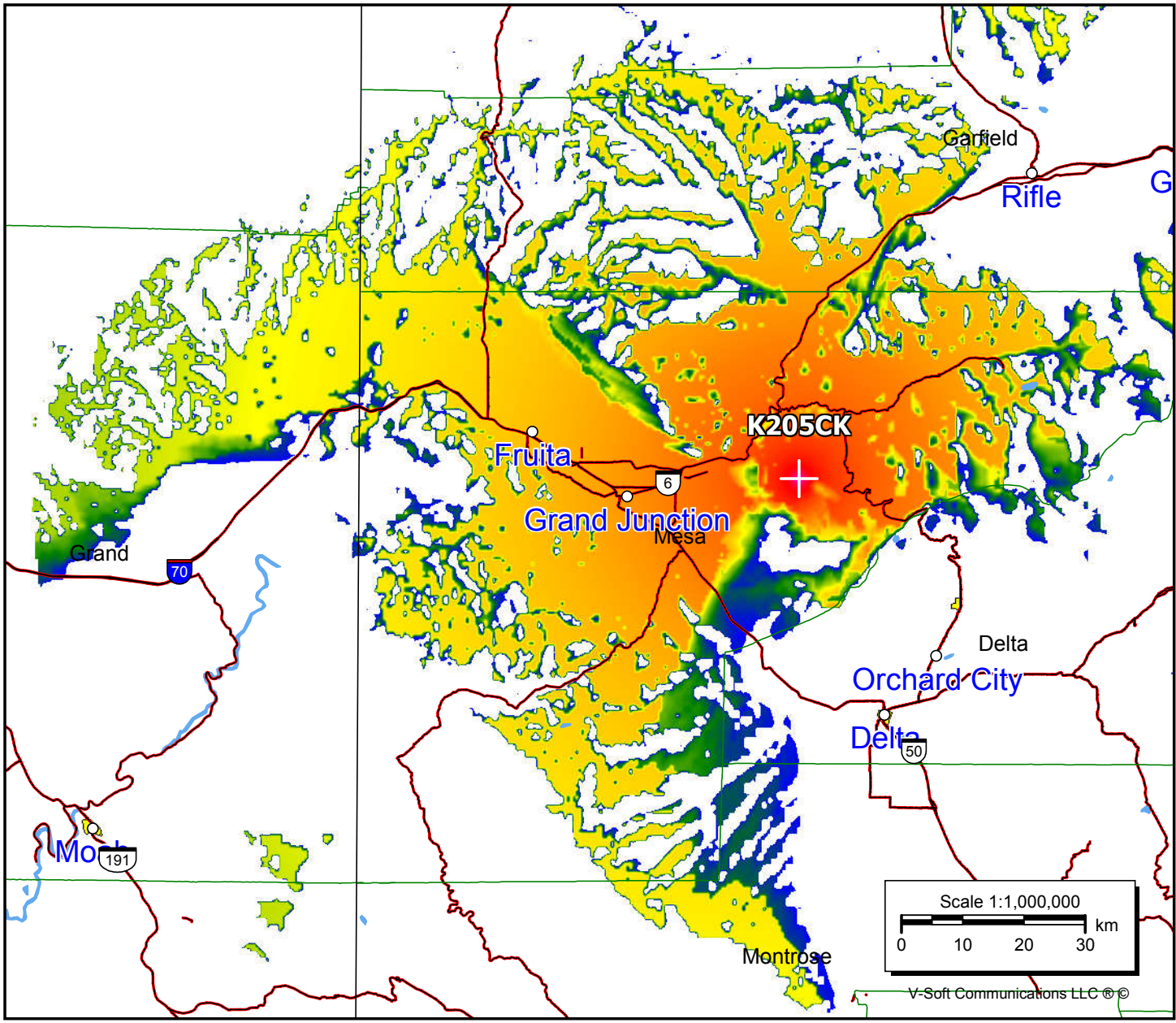


K205CK, Grand Junction, CO FAC# 8419
December 27, 2020

K205CK
 BMLFT19970218TI
 Latitude: 39-05-21.90 N
 Longitude: 108-13-35.20 W
 ERP: 0.01 kW
 Channel: 205
 Frequency: 88.9 MHz
 AMSL Height: 3042.0 m
 Elevation: 3030.0 m
 Horiz. Pattern: Omni
 Vert. Pattern: No
 Prop Model: Longley-Rice
 Climate: Cont temperate
 Conductivity: 0.0050
 Dielec Const: 15.0
 Refractivity: 311.0
 Receiver Ht AG: 9.1 m
 Receiver Gain: 0 dB
 Time Variability: 50.0%
 Sit. Variability: 50.0%
 ITM Mode: Broadcast



Population	
60 dBμ	31,583
54 dBμ	139,894
48 dBμ	149,308



V-Soft Communications LLC ©