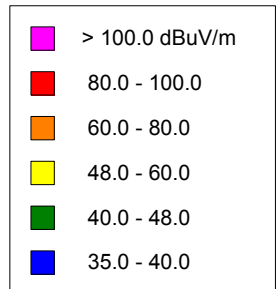
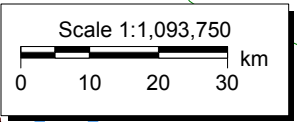
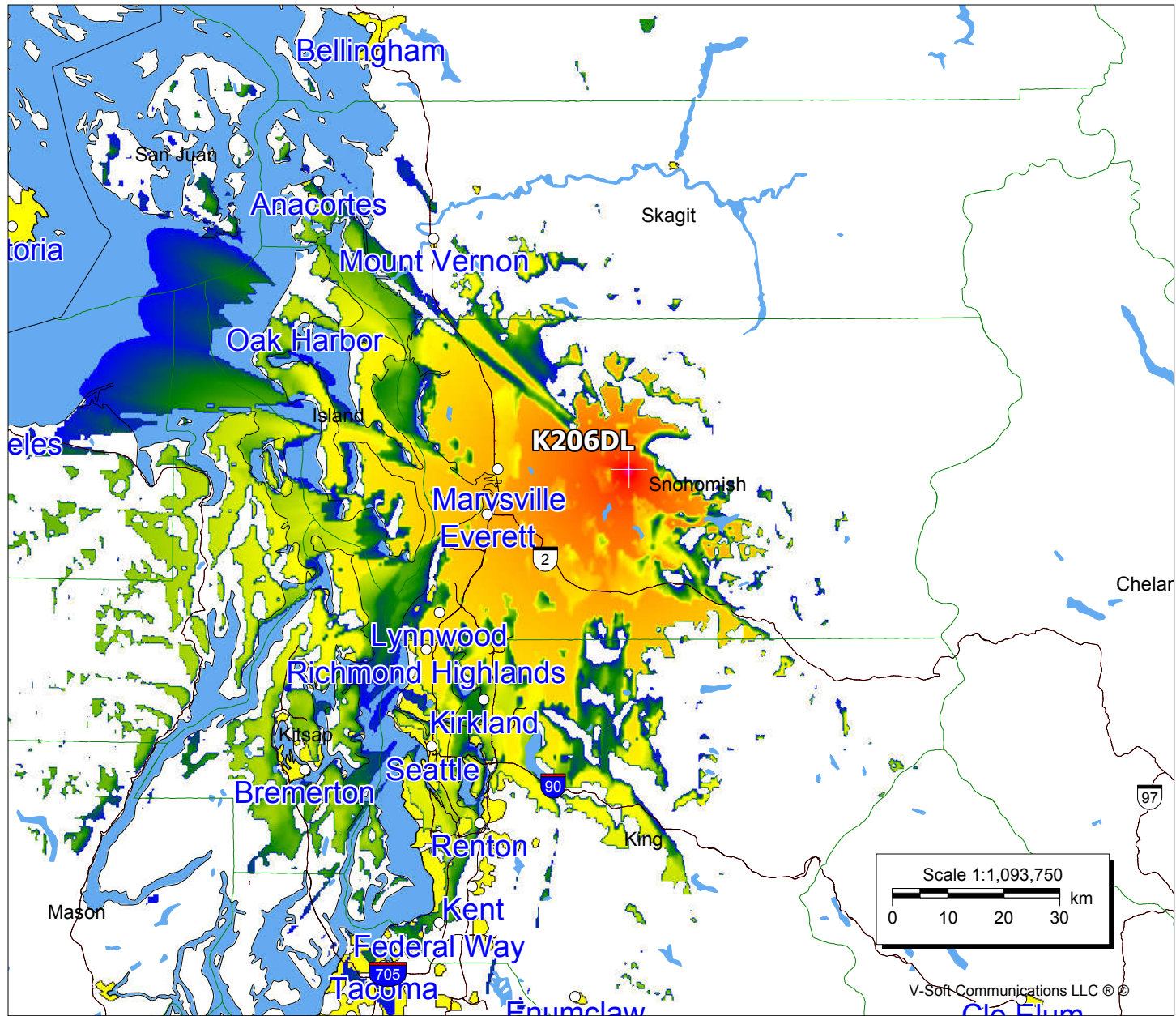


**K206DL, Granite Falls-Everett, WA FAC# 92481**  
**December 31, 2020**

**K206DL**  
 BLFT20050314AAS  
 Latitude: 48-03-05.30 N  
 Longitude: 121-51-41.40 W  
 ERP: 0.005 kW  
 Channel: 206  
 Frequency: 89.1 MHz  
 AMSL Height: 775.0 m  
 Elevation: 748.0 m  
 Horiz. Pattern: Directional  
 Vert. Pattern: No  
 Prop Model: Longley-Rice  
 Climate: Cont temperate  
 Conductivity: 0.0050  
 Dielec Const: 15.0  
 Refractivity: 311.0  
 Receiver Ht AG: 9.1 m  
 Receiver Gain: 0 dB  
 Time Variability: 50.0%  
 Sit. Variability: 50.0%  
 ITM Mode: Broadcast



Population	
60 dBμ	18,983
54 dBμ	232,443
48 dBμ	1,068,548



V-Soft Communications LLC ©