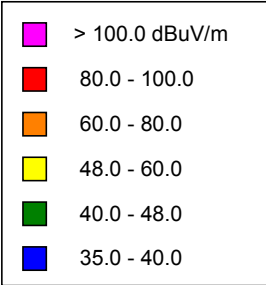
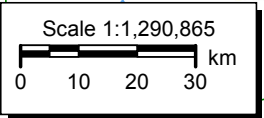
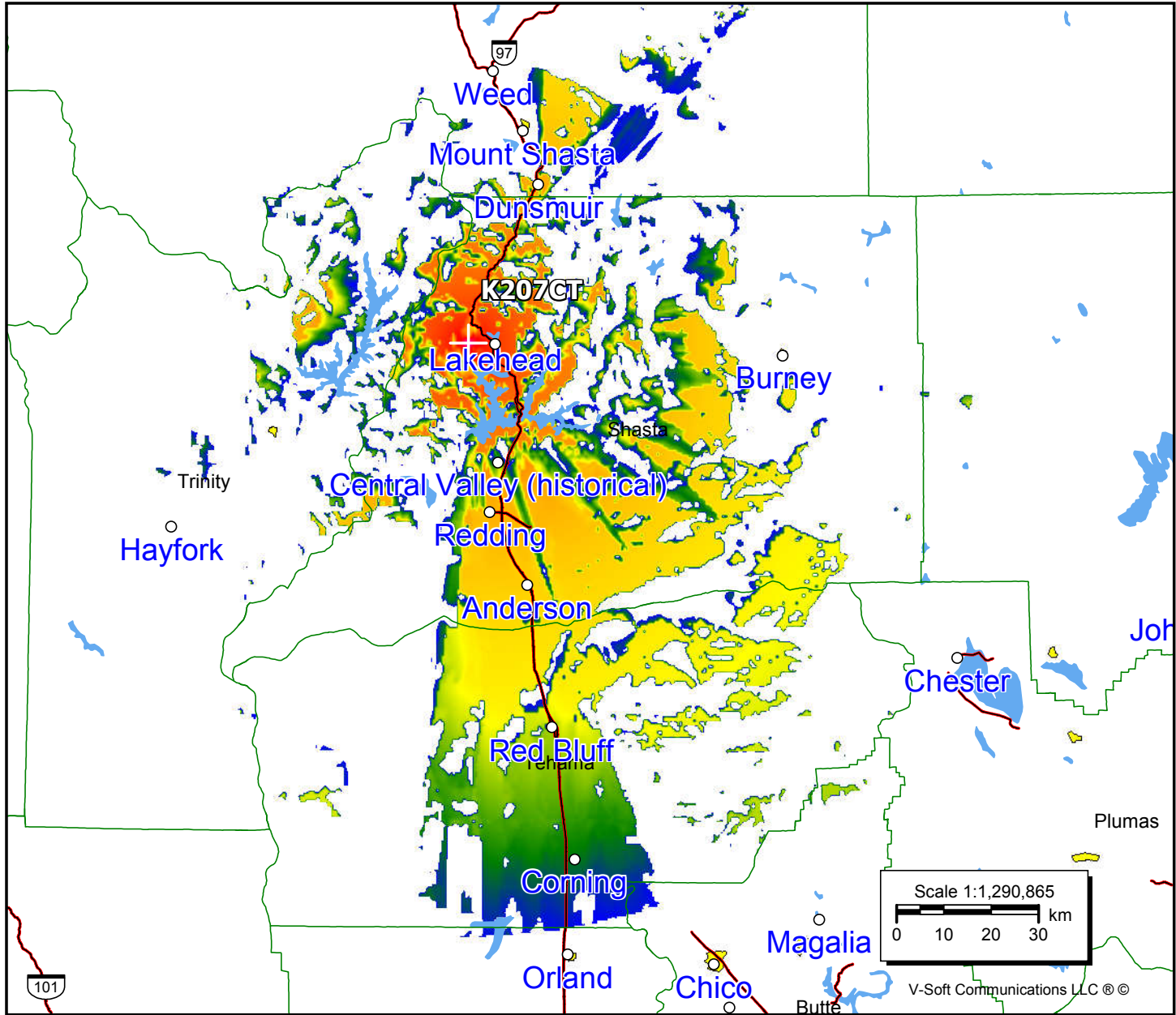


K207CT, Lakehead, CA FAC# 91286
December 26, 2020

K207CT
 BLFT20101227AAI
 Latitude: 40-54-26.50 N
 Longitude: 122-26-41 W
 ERP: 0.01 kW
 Channel: 207
 Frequency: 89.3 MHz
 AMSL Height: 1170.0 m
 Elevation: 1154.0 m
 Horiz. Pattern: Omni
 Vert. Pattern: No
 Prop Model: Longley-Rice
 Climate: Cont temperate
 Conductivity: 0.0050
 Dielec Const: 15.0
 Refractivity: 311.0
 Receiver Ht AG: 9.1 m
 Receiver Gain: 0 dB
 Time Variability: 50.0%
 Sit. Variability: 50.0%
 ITM Mode: Broadcast



Population	
60 dBu	756
54 dBu	83,352
48 dBu	146,918



V-Soft Communications LLC ©