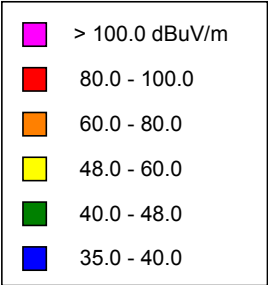
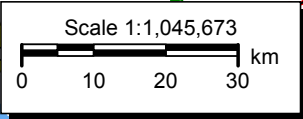
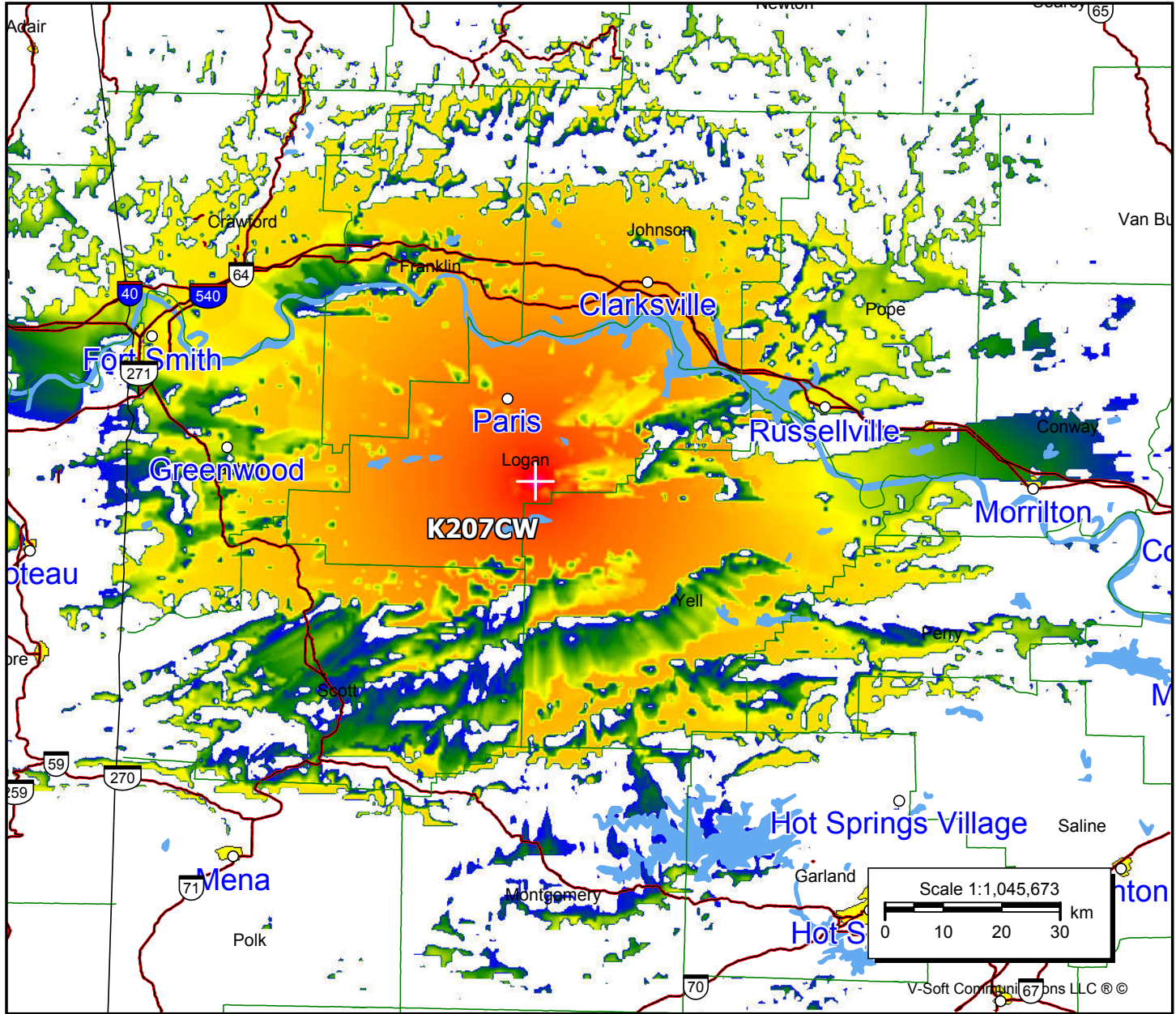


**K207CW, Paris, AR FAC# 92540**  
**December 23, 2020**

**K207CW**  
 BLFT20040720AAH  
 Latitude: 35-09-54.30 N  
 Longitude: 093-40-38.70 W  
 ERP: 0.01 kW  
 Channel: 207  
 Frequency: 89.3 MHz  
 AMSL Height: 912.0 m  
 Elevation: 823.0 m  
 Horiz. Pattern: Omni  
 Vert. Pattern: No  
 Prop Model: Longley-Rice  
 Climate: Cont temperate  
 Conductivity: 0.0050  
 Dielec Const: 15.0  
 Refractivity: 311.0  
 Receiver Ht AG: 9.1 m  
 Receiver Gain: 0 dB  
 Time Variability: 50.0%  
 Sit. Variability: 50.0%  
 ITM Mode: Broadcast



Population	
60 dB $\mu$	13,213
54 dB $\mu$	62,986
48 dB $\mu$	183,850



V-Soft Communications LLC ©