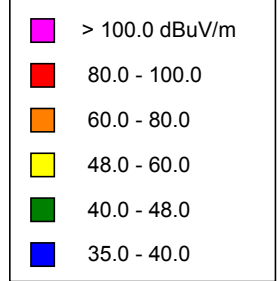


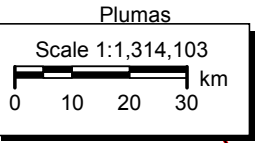
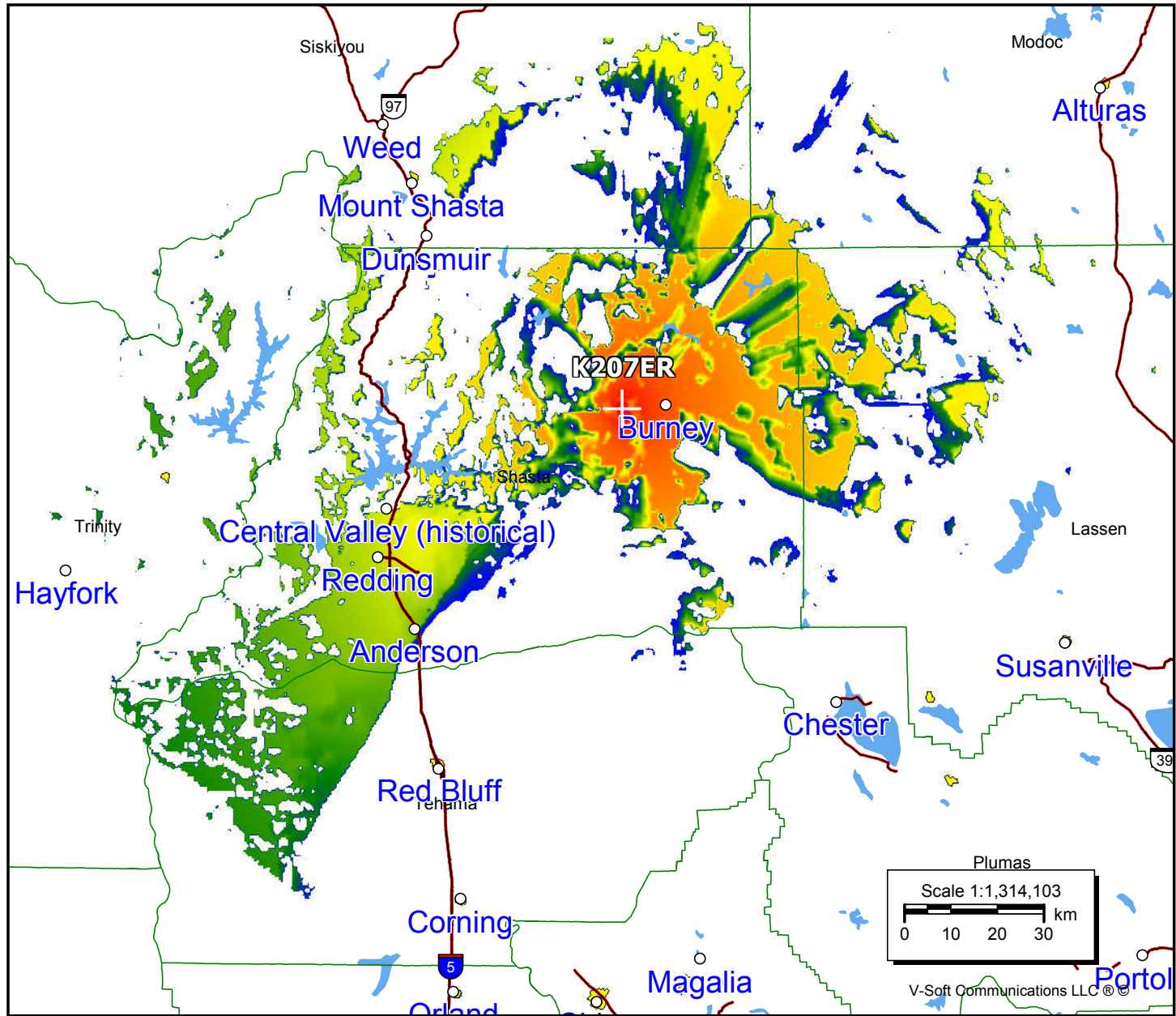
**K207ER, Burney, CA FAC# 91484**  
**December 25, 2020**

**K207ER**

BLFT20150713ABG  
 Latitude: 40-52-30.50 N  
 Longitude: 121-46-17.90 W  
 ERP: 0.01 kW  
 Channel: 207  
 Frequency: 89.3 MHz  
 AMSL Height: 1622.0 m  
 Elevation: 1614.0 m  
 Horiz. Pattern: Directional  
 Vert. Pattern: No  
 Prop Model: Longley-Rice  
 Climate: Cont temperate  
 Conductivity: 0.0050  
 Dielec Const: 15.0  
 Refractivity: 311.0  
 Receiver Ht AG: 9.1 m  
 Receiver Gain: 0 dB  
 Time Variability: 50.0%  
 Sit. Variability: 50.0%  
 ITM Mode: Broadcast



Population	
60 dB $\mu$	4,514
54 dB $\mu$	5,116
48 dB $\mu$	6,017



V-Soft Communications LLC ©