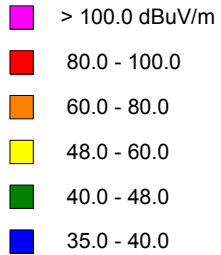


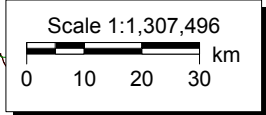
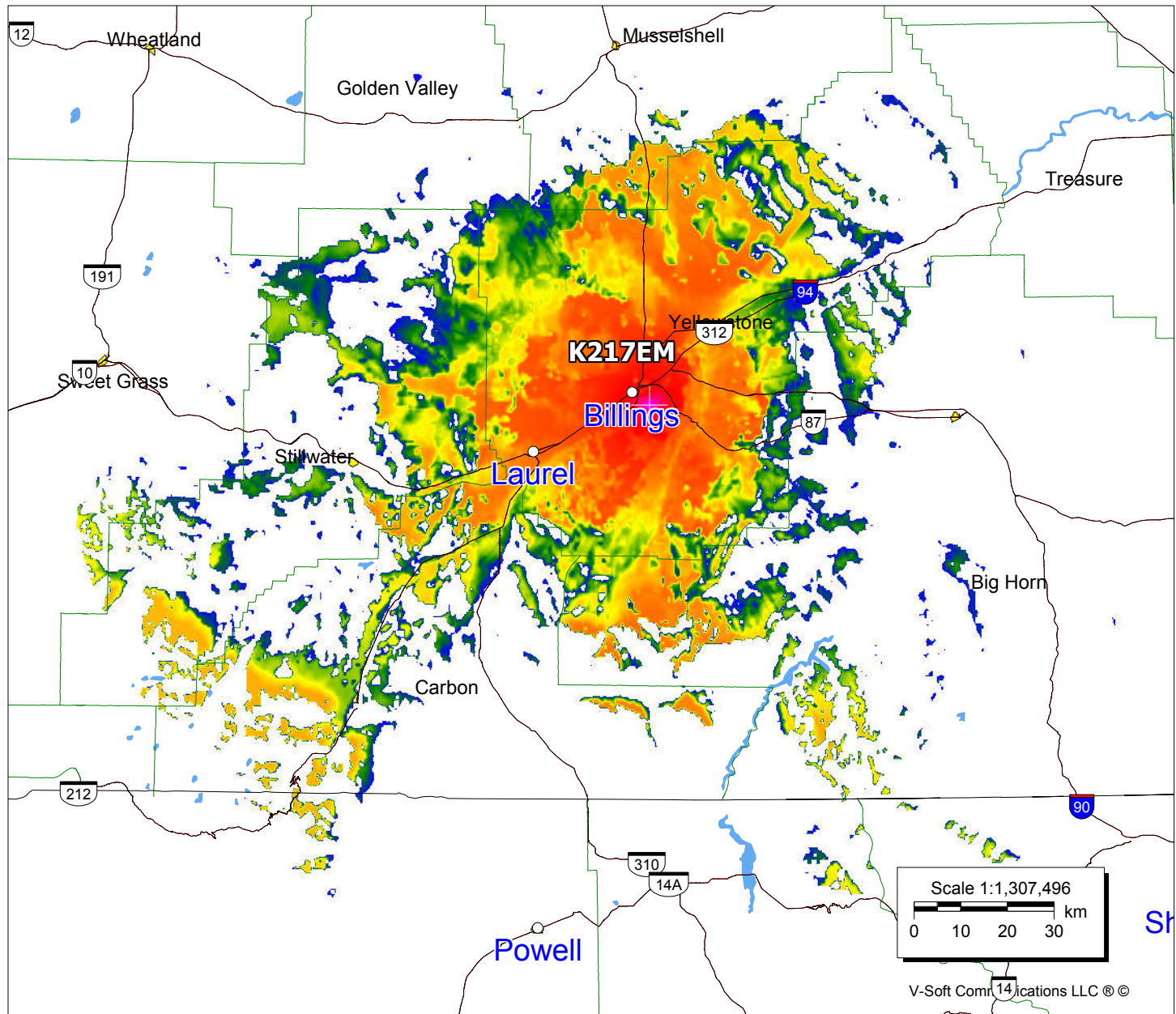
K217EM, Billings, MT FAC# 93793
December 28, 2020

K217EM

0000117205
Latitude: 45-45-32 N
Longitude: 108-27-10 W
ERP: 0.075 kW
Channel: 217
Frequency: 91.3 MHz
AMSL Height: 1160.5 m
Elevation: 1130.0 m
Horiz. Pattern: Omni
Vert. Pattern: No
Prop Model: Longley-Rice
Climate: Cont temperate
Conductivity: 0.0050
Dielec Const: 15.0
Refractivity: 311.0
Receiver Ht AG: 9.1 m
Receiver Gain: 0 dB
Time Variability: 50.0%
Sit. Variability: 50.0%
ITM Mode: Broadcast



Population	
60 dBμ	150,812
54 dBμ	154,806
48 dBμ	158,205



V-Soft Communications LLC ©