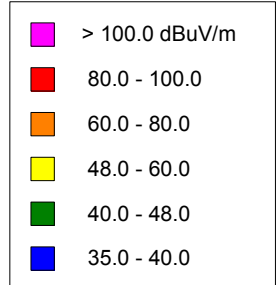


K220KA, Kerrville, TX FAC# 121236
December 30, 2020

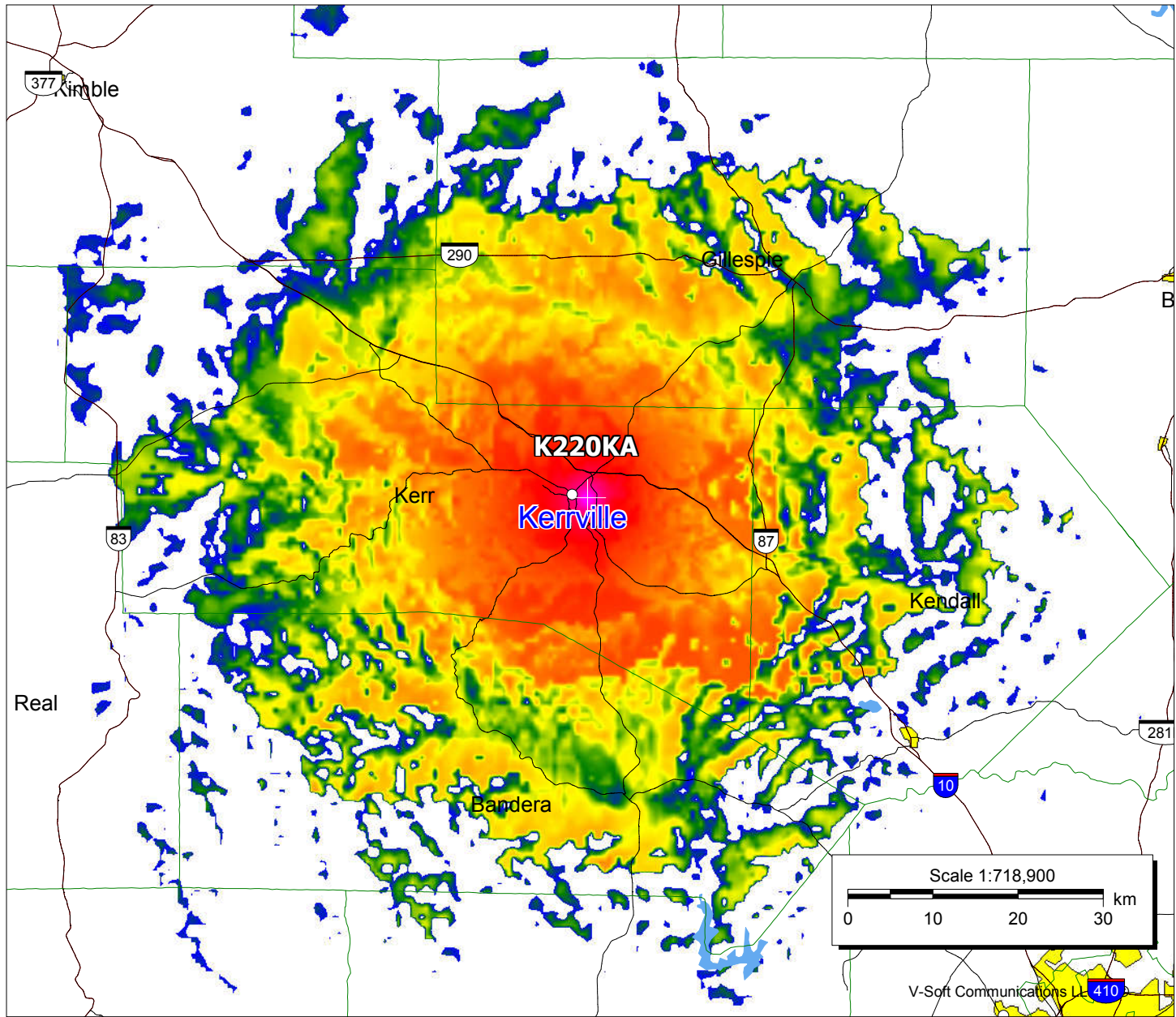
K220KA

BLFT20171130AAV
 Latitude: 30-02-37.80 N
 Longitude: 099-07-17.10 W
 ERP: 0.062 kW
 Channel: 220
 Frequency: 91.9 MHz
 AMSL Height: 639.0 m
 Elevation: 579.0 m
 Horiz. Pattern: Omni
 Vert. Pattern: No
 Prop Model: Longley-Rice
 Climate: Cont temperate
 Conductivity: 0.0050
 Dielec Const: 15.0
 Refractivity: 311.0
 Receiver Ht AG: 9.1 m
 Receiver Gain: 0 dB
 Time Variability: 50.0%
 Sit. Variability: 50.0%
 ITM Mode: Broadcast



Population

60 dBμ	47,597
54 dBμ	53,803
48 dBμ	69,527



V-Soft Communications L.L.C. 410