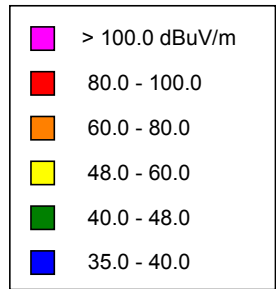
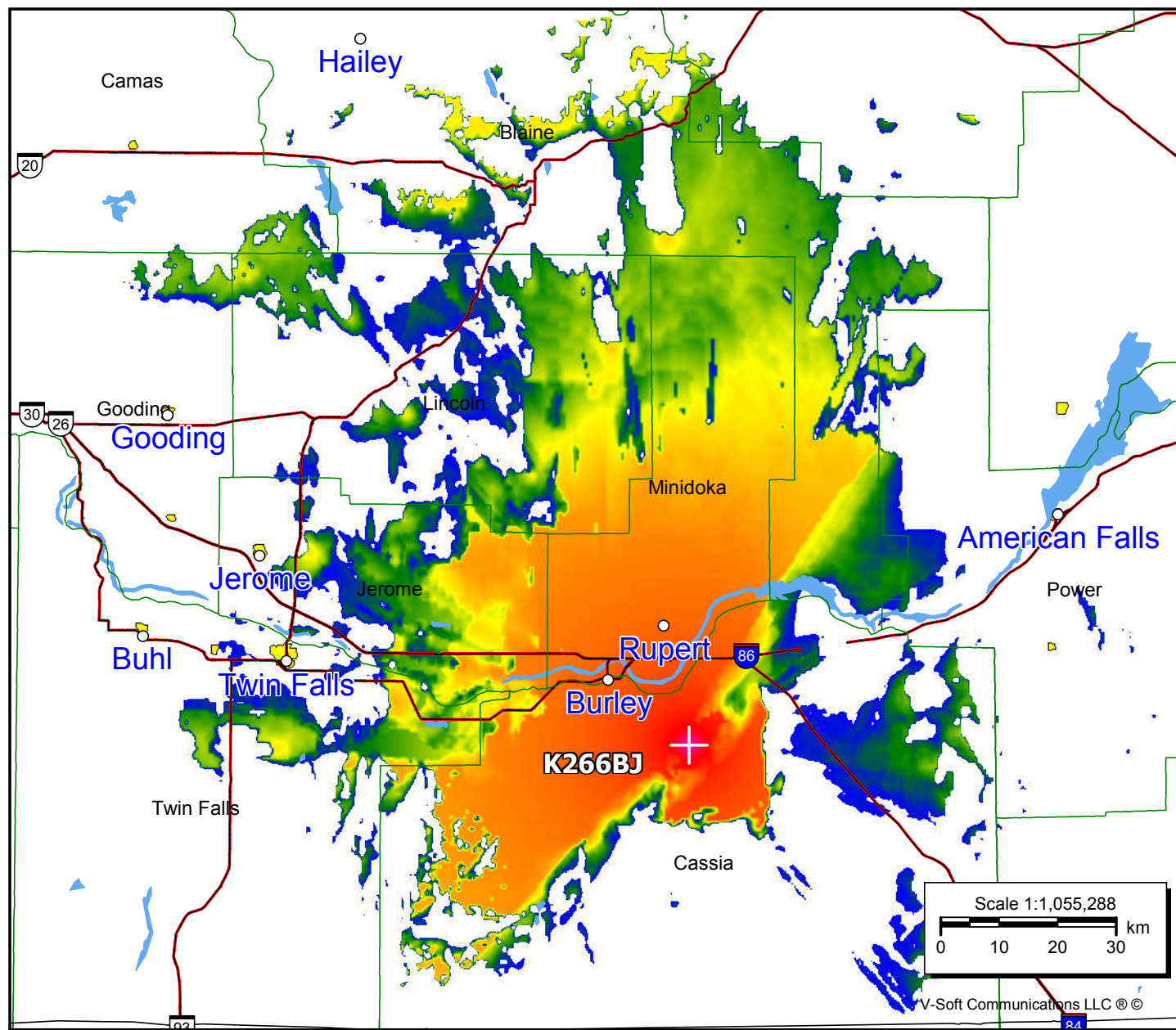


K266BJ, Burley, ID FAC# 122265
December 28, 2020

K266BJ
 BLFT20140218AGB
 Latitude: 42-26-07.60 N
 Longitude: 113-37-27 W
 ERP: 0.023 kW
 Channel: 266
 Frequency: 101.1 MHz
 AMSL Height: 1597.0 m
 Elevation: 1591.0 m
 Horiz. Pattern: Omni
 Vert. Pattern: No
 Prop Model: Longley-Rice
 Climate: Cont temperate
 Conductivity: 0.0050
 Dielec Const: 15.0
 Refractivity: 311.0
 Receiver Ht AG: 9.1 m
 Receiver Gain: 0 dB
 Time Variability: 50.0%
 Sit. Variability: 50.0%
 ITM Mode: Broadcast



Population	
60 dBμ	39,550
54 dBμ	41,448
48 dBμ	42,034



V-Soft Communications LLC ©