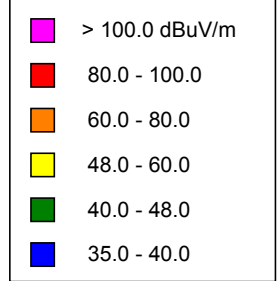


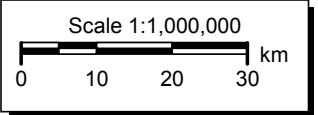
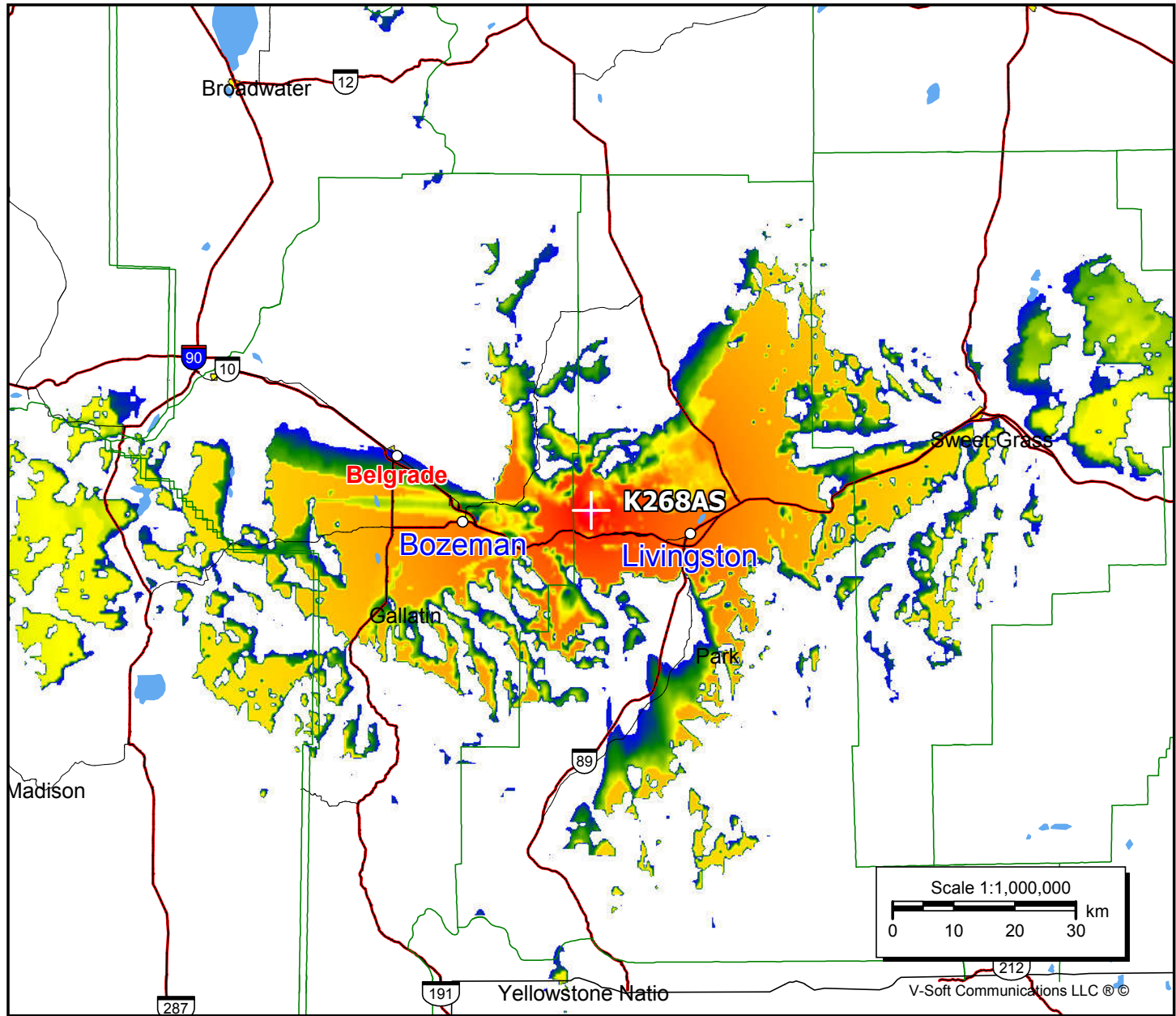
K268AS, Bozeman, MT FAC# 141013
December 28, 2020

K268AS

BLFT20061218ACH
 Latitude: 45-41-48.70 N
 Longitude: 110-46-05.70 W
 ERP: 0.01 kW
 Channel: 268
 Frequency: 101.5 MHz
 AMSL Height: 2218.0 m
 Elevation: 2213.0 m
 Horiz. Pattern: Omni
 Vert. Pattern: No
 Prop Model: Longley-Rice
 Climate: Cont temperate
 Conductivity: 0.0050
 Dielec Const: 15.0
 Refractivity: 311.0
 Receiver Ht AG: 9.1 m
 Receiver Gain: 0 dB
 Time Variability: 50.0%
 Sit. Variability: 50.0%
 ITM Mode: Broadcast



Population	
60 dB μ	22,838
54 dB μ	55,624
48 dB μ	69,633



V-Soft Communications LLC ©