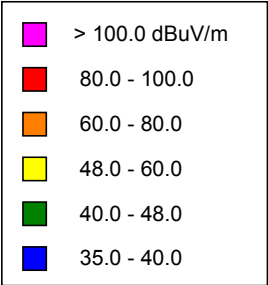
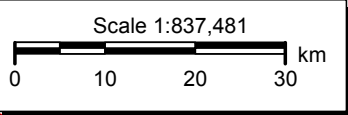
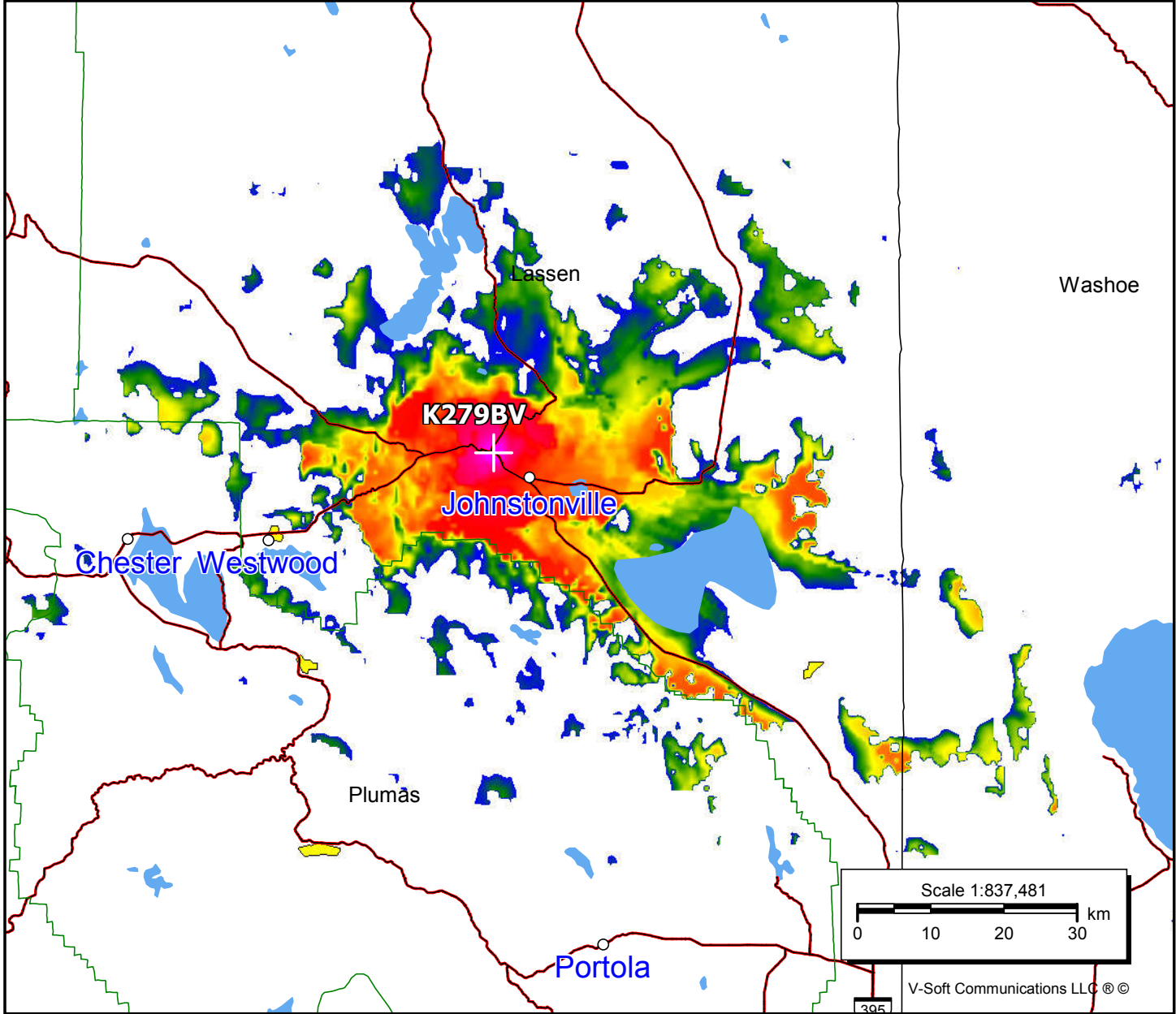


K279BV, Johnstonville, CA FAC# 92958
December 26, 2020

K279BV
 BLFT20140821AAE
 Latitude: 40-24-53.60 N
 Longitude: 120-38-37.80 W
 ERP: 0.25 kW
 Channel: 279
 Frequency: 103.7 MHz
 AMSL Height: 1314.0 m
 Elevation: 1280.0 m
 Horiz. Pattern: Omni
 Vert. Pattern: No
 Prop Model: Longley-Rice
 Climate: Cont temperate
 Conductivity: 0.0050
 Dielec Const: 15.0
 Refractivity: 311.0
 Receiver Ht AG: 9.1 m
 Receiver Gain: 0 dB
 Time Variability: 50.0%
 Sit. Variability: 50.0%
 ITM Mode: Broadcast



| Population | |
|------------|--------|
| 60 dBμ | 21,105 |
| 54 dBμ | 22,556 |
| 48 dBμ | 23,462 |



V-Soft Communications LLC ©