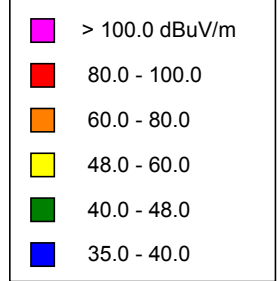


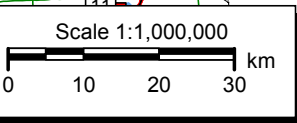
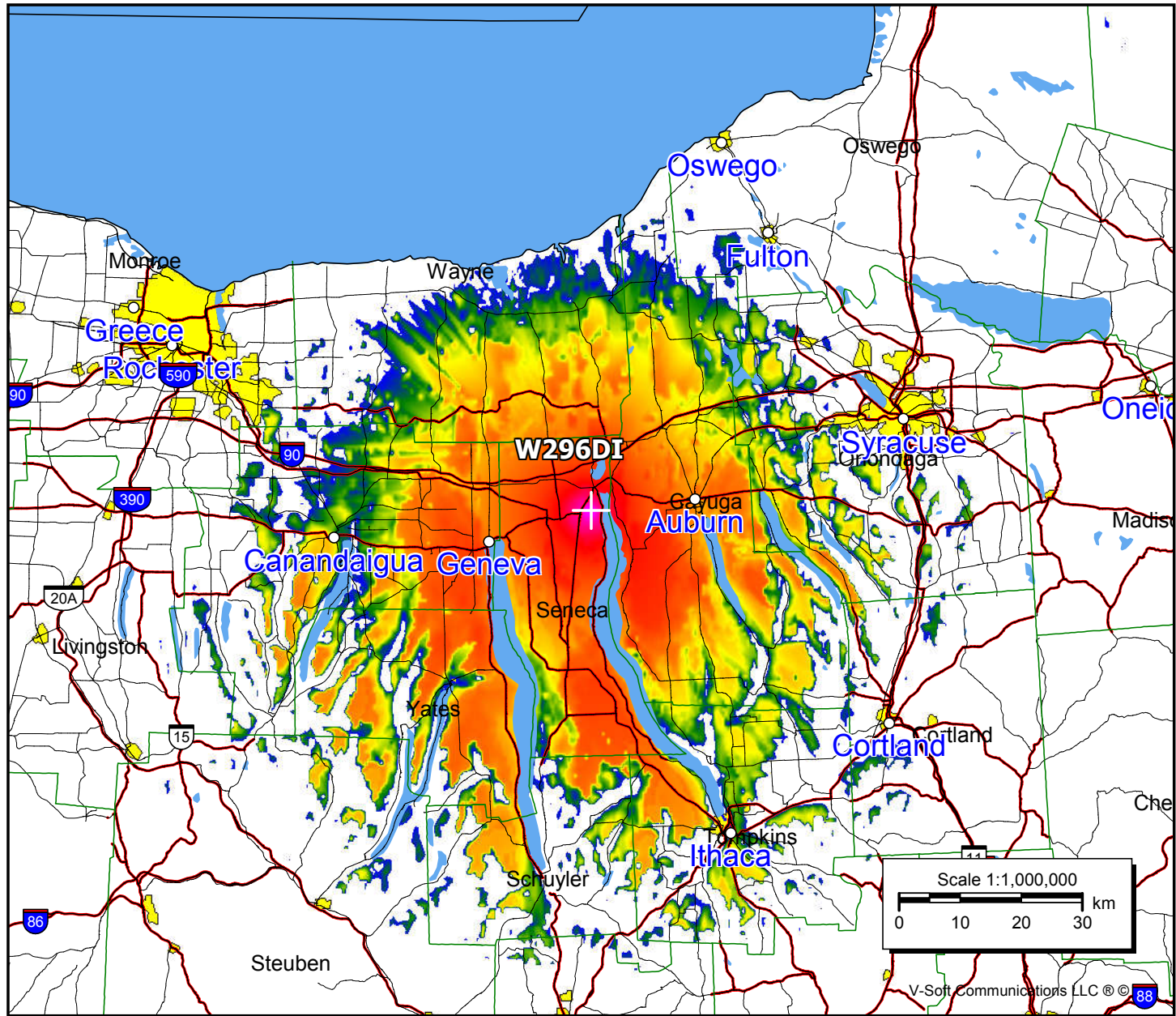
W296DI, Seneca Falls, NY FAC# 138690
December 30, 2020

W296DI

BLFT20161205AAQ
 Latitude: 42-54-55.20 N
 Longitude: 076-46-26.80 W
 ERP: 0.20 kW
 Channel: 296
 Frequency: 107.1 MHz
 AMSL Height: 212.0 m
 Elevation: 137.0 m
 Horiz. Pattern: Directional
 Vert. Pattern: No
 Prop Model: Longley-Rice
 Climate: Cont temperate
 Conductivity: 0.0050
 Dielec Const: 15.0
 Refractivity: 311.0
 Receiver Ht AG: 9.1 m
 Receiver Gain: 0 dB
 Time Variability: 50.0%
 Sit. Variability: 50.0%
 ITM Mode: Broadcast



Population	
60 dBμ	85,580
54 dBμ	131,586
48 dBμ	172,619



V-Soft Communications LLC © 88