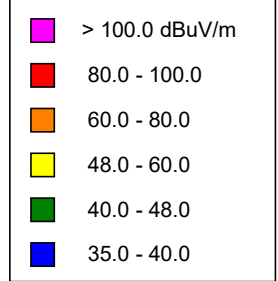


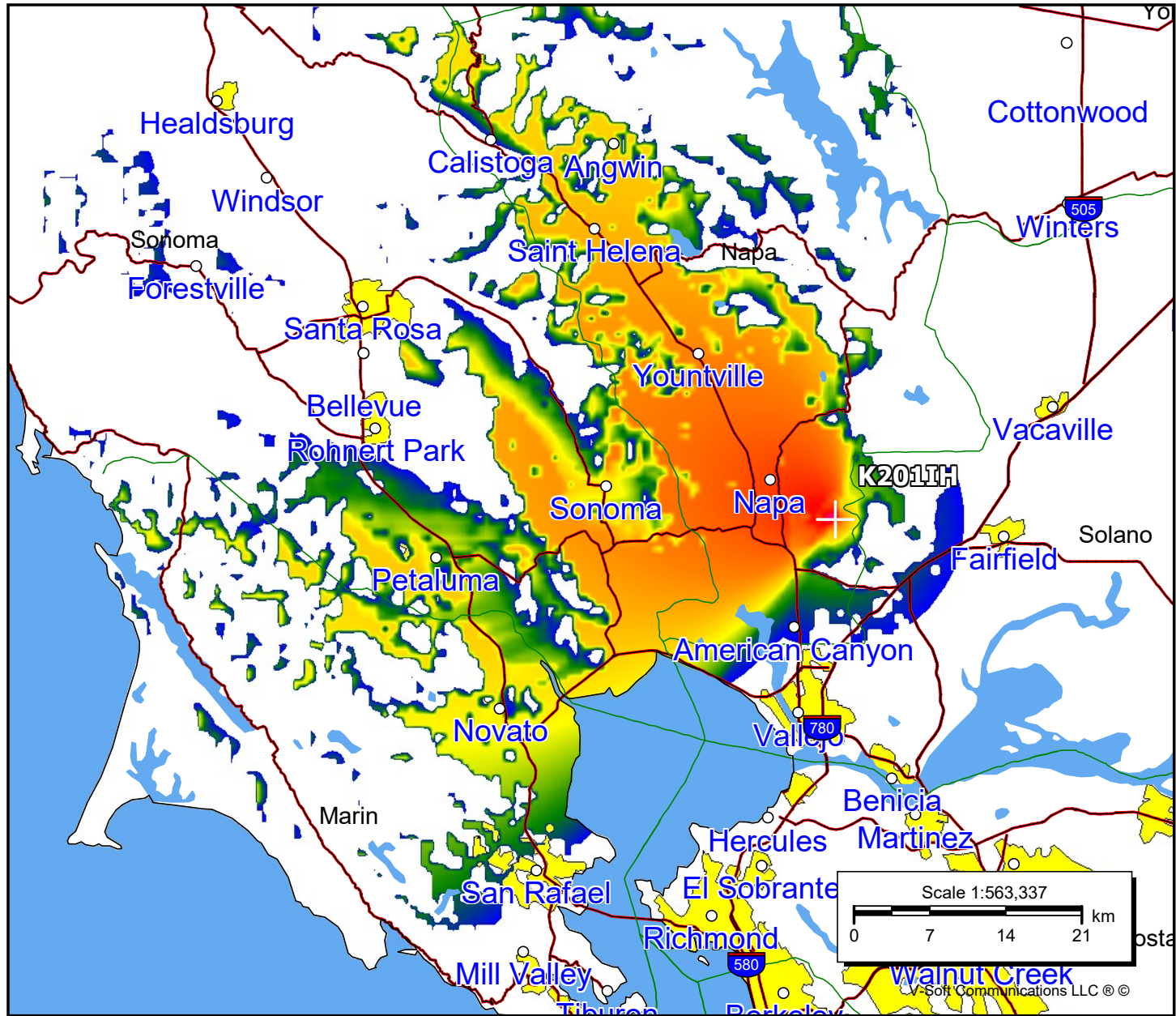
**K201IH, Napa, CA, FAC# 91413**  
**February 7, 2023**

**K201IH**

BLFT20110224AAF  
 Latitude: 38-15-50.70 N  
 Longitude: 122-12-57.90 W  
 ERP: 0.01 kW  
 Channel: 201  
 Frequency: 88.1 MHz  
 AMSL Height: 537.0 m  
 Elevation: 507.0 m  
 Horiz. Pattern: Directional  
 Vert. Pattern: No  
 Prop Model: Longley-Rice  
 Climate: Cont temperate  
 Conductivity: 0.0050  
 Dielec Const: 15.0  
 Refractivity: 311.0  
 Receiver Ht AG: 2.0 m  
 Receiver Gain: 0 dB  
 Time Variability: 50.0%  
 Sit. Variability: 50.0%  
 ITM Mode: Broadcast



Population	
60 dBμ	89,835
54 dBμ	103,391
48 dBμ	154,048



© 2023 V-Soft Communications LLC