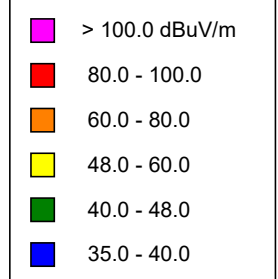


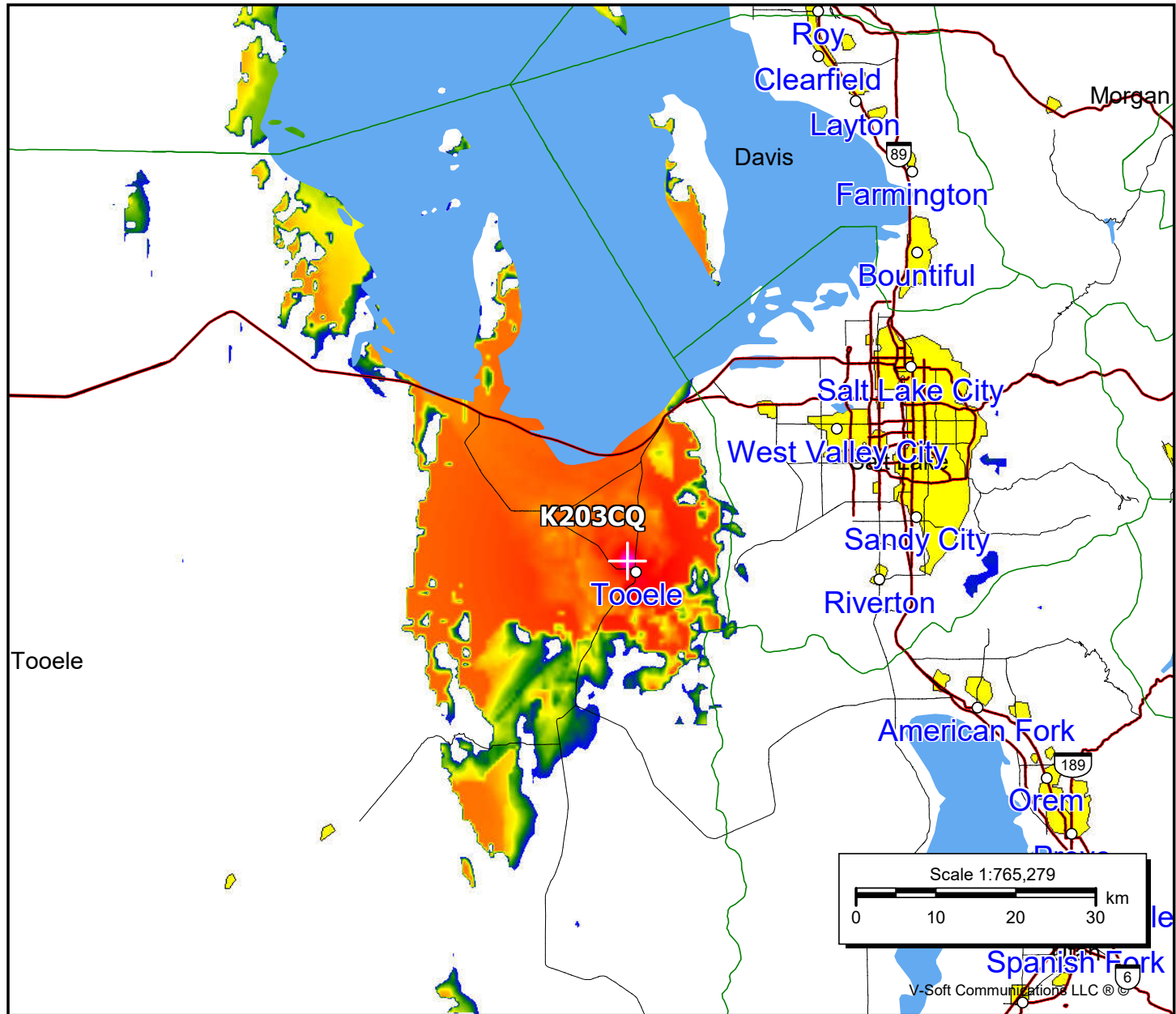
**K203CQ, Tooele, UT FAC# 77061**  
**April 30, 2023**

**K203CQ**

BMLFT20190625AAB  
 Latitude: 40-32-35.80 N  
 Longitude: 112-18-35.80 W  
 ERP: 0.041 kW  
 Channel: 203  
 Frequency: 88.5 MHz  
 AMSL Height: 1539.0 m  
 Elevation: 1489.0 m  
 Horiz. Pattern: Omni  
 Vert. Pattern: No  
 Prop Model: Longley-Rice  
 Climate: Cont temperate  
 Conductivity: 0.0050  
 Dielec Const: 15.0  
 Refractivity: 311.0  
 Receiver Ht AG: 2.0 m  
 Receiver Gain: 0 dB  
 Time Variability: 50.0%  
 Sit. Variability: 50.0%  
 ITM Mode: Broadcast



Population	
60 dBμ	64,134
54 dBμ	67,143
48 dBμ	68,392



V-Soft Communications LLC ©