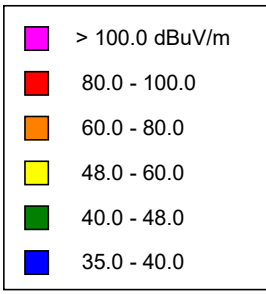


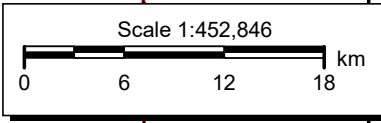
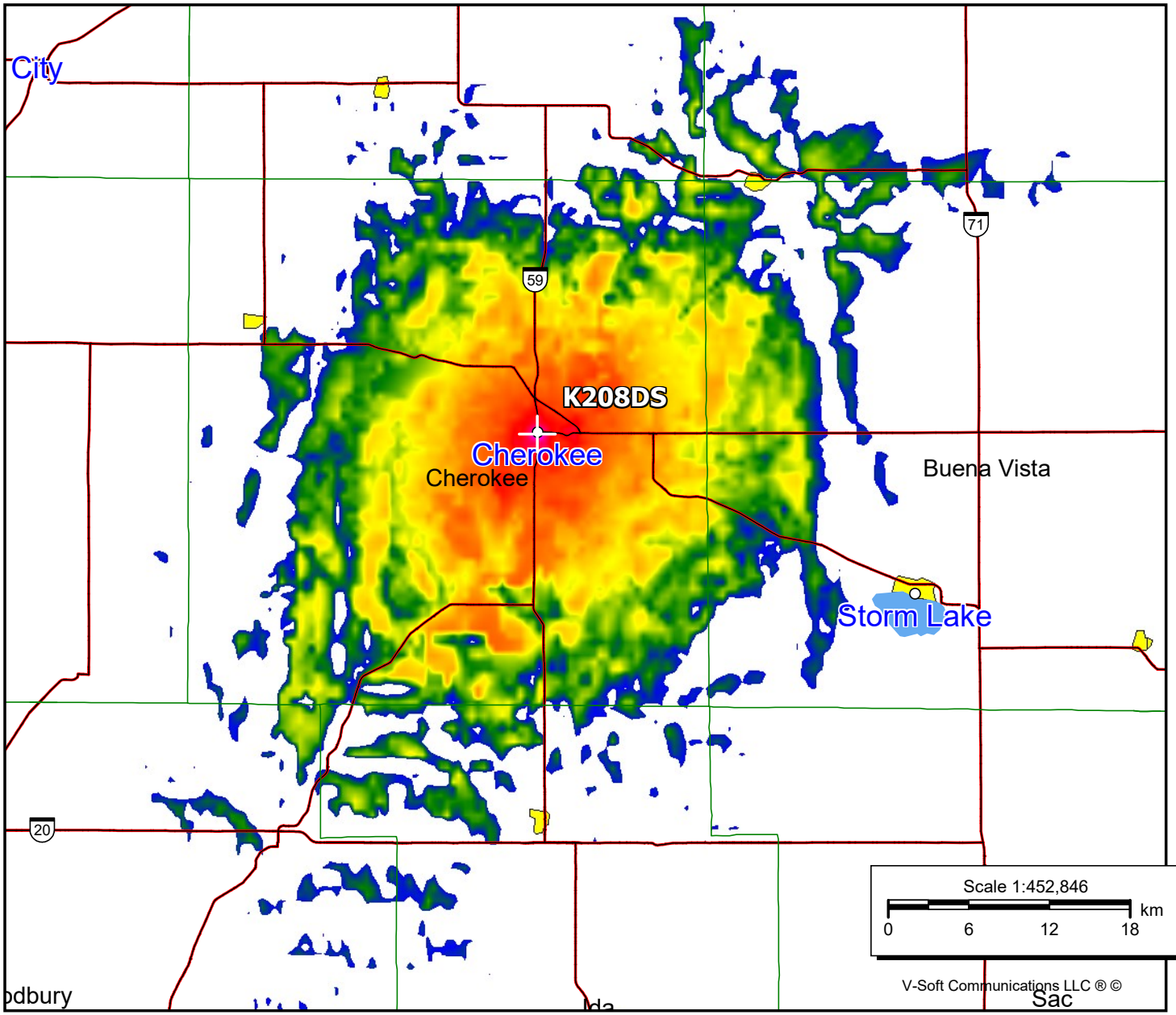
K208DS, Cherokee, IA FAC# 92825
February 13, 2023

K208DS
 BMLFT20080930BKV
 Latitude: 42-44-53.90 N
 Longitude: 095-33-07 W
 ERP: 0.226 kW
 Channel: 208
 Frequency: 89.5 MHz
 AMSL Height: 375.0 m
 Elevation: 364.0 m
 Horiz. Pattern: Omni
 Vert. Pattern: No
 Prop Model: Longley-Rice
 Climate: Cont temperate
 Conductivity: 0.0050
 Dielec Const: 15.0
 Refractivity: 311.0
 Receiver Ht AG: 2.0 m
 Receiver Gain: 0 dB
 Time Variability: 50.0%
 Sit. Variability: 50.0%
 ITM Mode: Broadcast



Population

60 dBμ	5,932
54 dBμ	6,790
48 dBμ	8,142



V-Soft Communications LLC © ©
 Sac