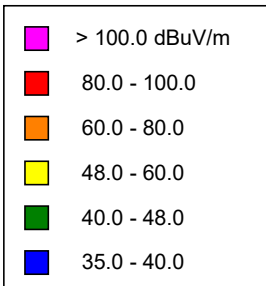
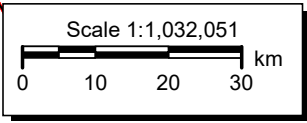
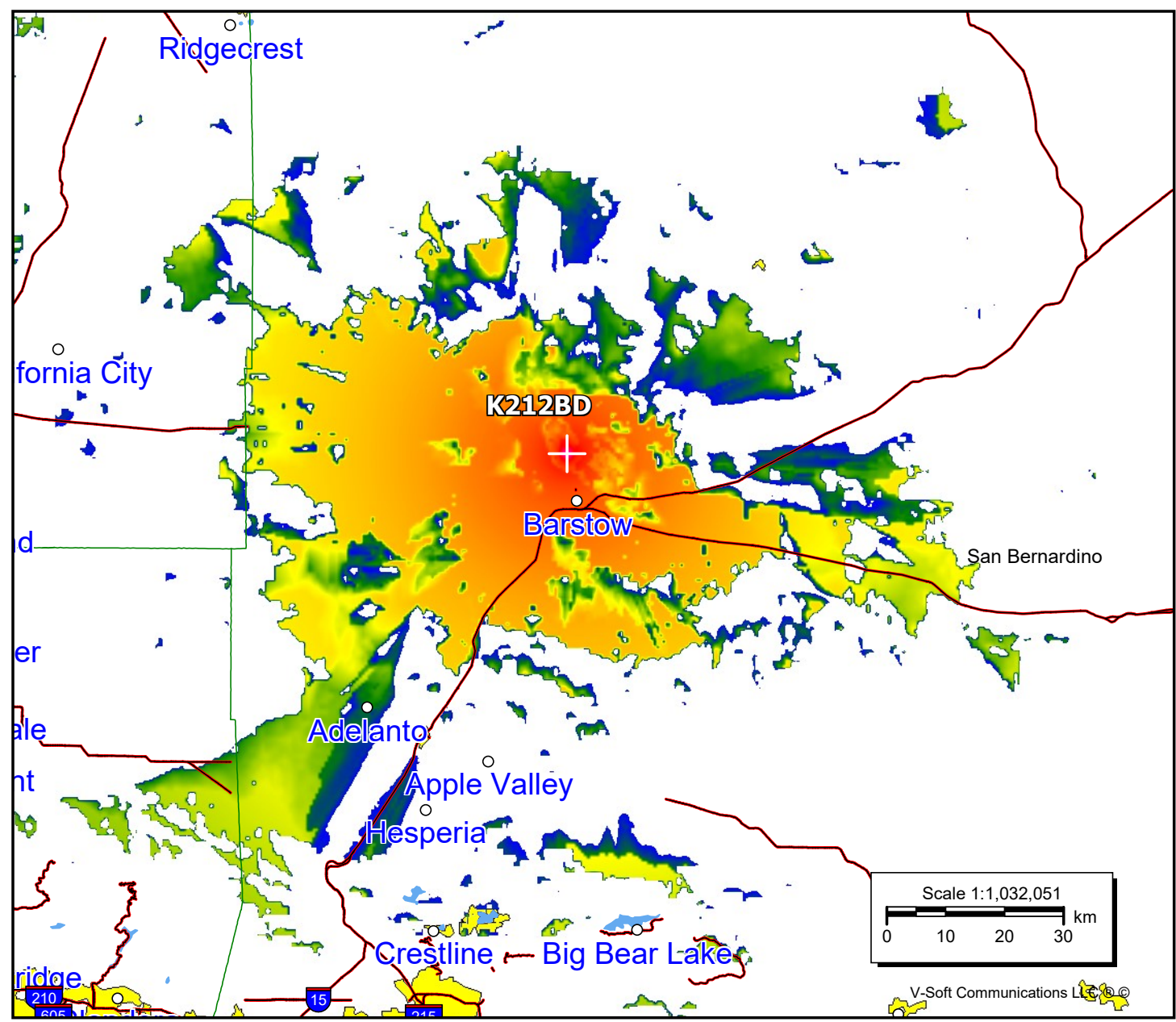


K212BD, Barstow, CA FAC# 8427
February 03, 2023

K212BD
 BLFT20181029AAK
 Latitude: 34-58-14.90 N
 Longitude: 117-02-24.10 W
 ERP: 0.006 kW
 Channel: 212
 Frequency: 90.3 MHz
 AMSL Height: 1037.0 m
 Elevation: 1026.0 m
 Horiz. Pattern: Omni
 Vert. Pattern: No
 Prop Model: Longley-Rice
 Climate: Cont temperate
 Conductivity: 0.0050
 Dielec Const: 15.0
 Refractivity: 311.0
 Receiver Ht AG: 2.0 m
 Receiver Gain: 0 dB
 Time Variability: 50.0%
 Sit. Variability: 50.0%
 ITM Mode: Broadcast



| Population | |
|------------|--------|
| 60 dBμ | 34,903 |
| 54 dBμ | 37,795 |
| 48 dBμ | 44,916 |



V-Soft Communications LLC ©