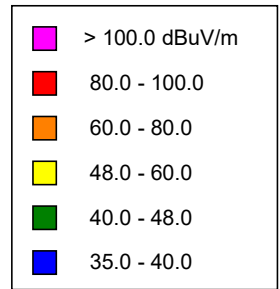


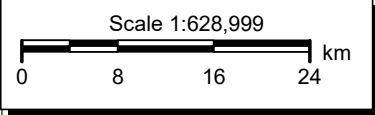
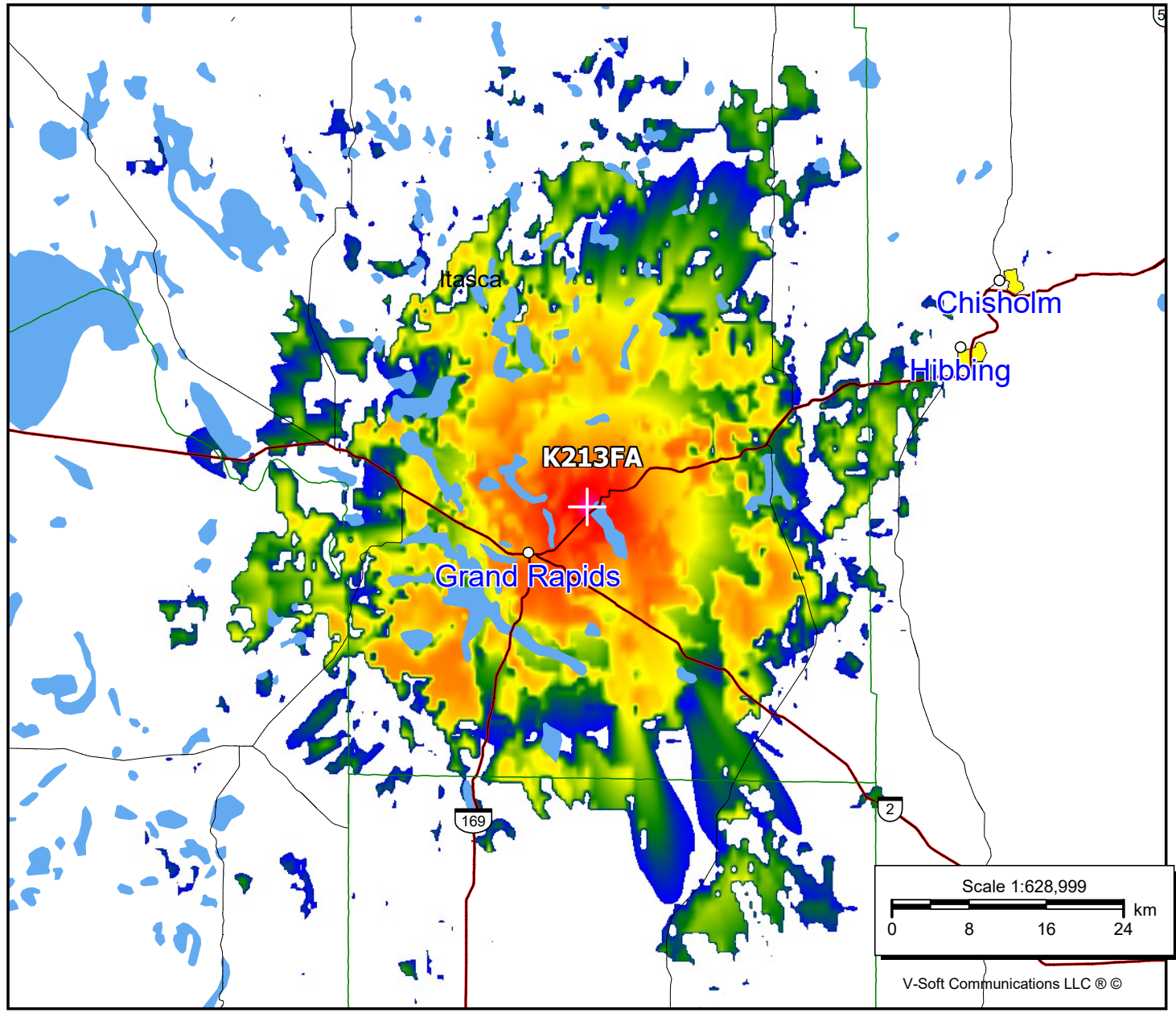
K213FA, Grand Rapids, MN FAC# 93953
February 13, 2023

K213FA

BLFT20110314AAT
 Latitude: 47-16-47.80 N
 Longitude: 093-26-58.80 W
 ERP: 0.01 kW
 Channel: 213
 Frequency: 90.5 MHz
 AMSL Height: 551.0 m
 Elevation: 460.0 m
 Horiz. Pattern: Omni
 Vert. Pattern: No
 Prop Model: Longley-Rice
 Climate: Cont temperate
 Conductivity: 0.0050
 Dielec Const: 15.0
 Refractivity: 311.0
 Receiver Ht AG: 2.0 m
 Receiver Gain: 0 dB
 Time Variability: 50.0%
 Sit. Variability: 50.0%
 ITM Mode: Broadcast



Population	
60 dB μ	13,517
54 dB μ	19,575
48 dB μ	25,744



V-Soft Communications LLC ©