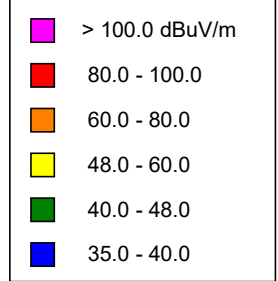


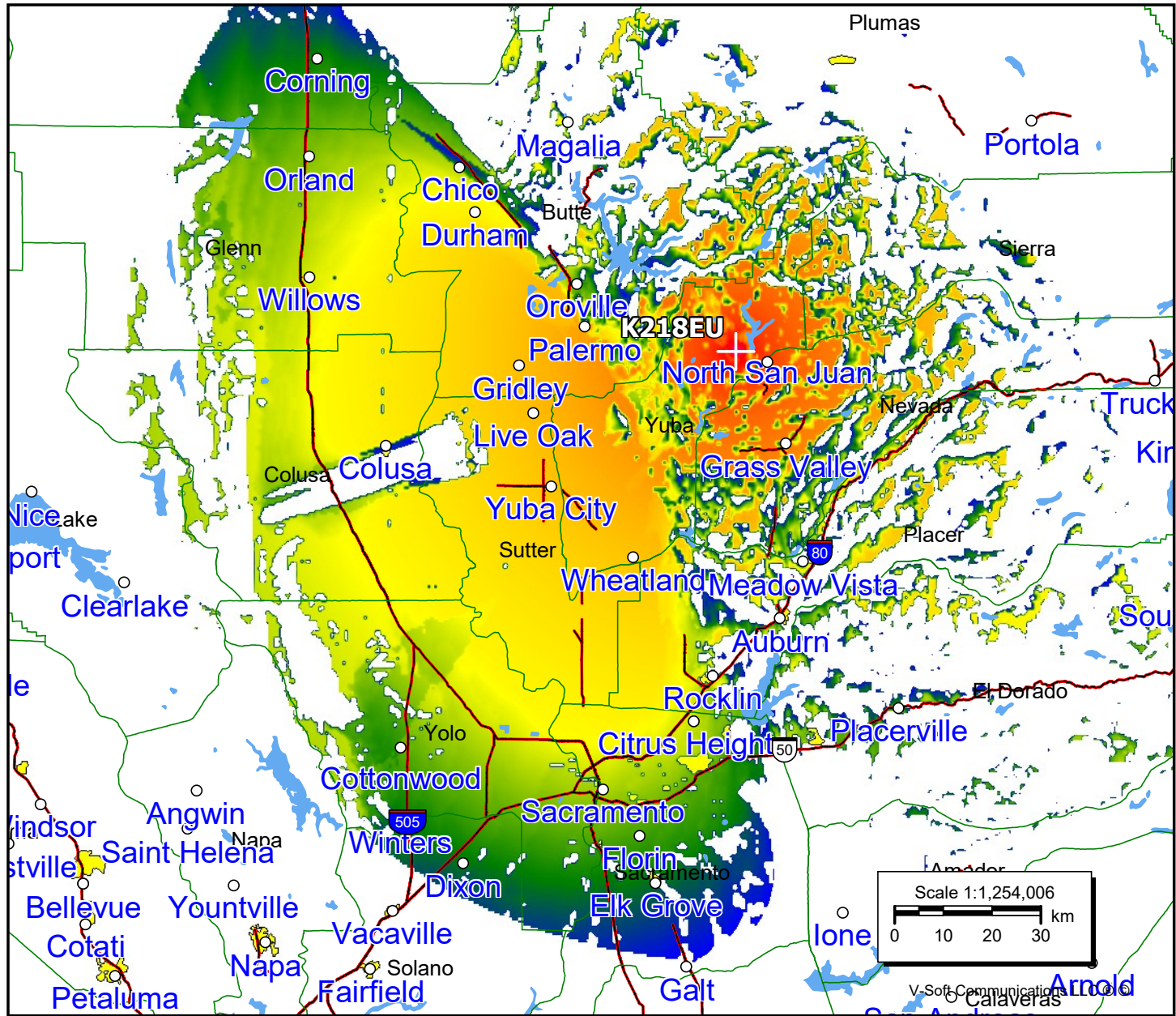
K218EU, North San Juan, CA FAC# 92260
February 7, 2023

K218EU

BLFT20160920ABO
 Latitude: 39-23-20.60 N
 Longitude: 121-10-38.80 W
 ERP: 0.01 kW
 Channel: 218
 Frequency: 91.5 MHz
 AMSL Height: 1076.0 m
 Elevation: 1033.0 m
 Horiz. Pattern: Omni
 Vert. Pattern: No
 Prop Model: Longley-Rice
 Climate: Cont temperate
 Conductivity: 0.0050
 Dielec Const: 15.0
 Refractivity: 311.0
 Receiver Ht AG: 2.0 m
 Receiver Gain: 0 dB
 Time Variability: 50.0%
 Sit. Variability: 50.0%
 ITM Mode: Broadcast



Population	
60 dBμ	21,963
54 dBμ	84,303
48 dBμ	456,023



V-Soft Communications