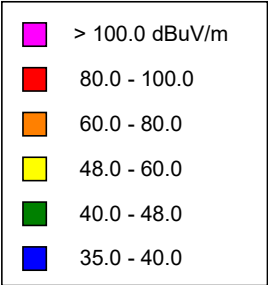
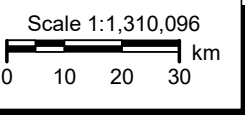
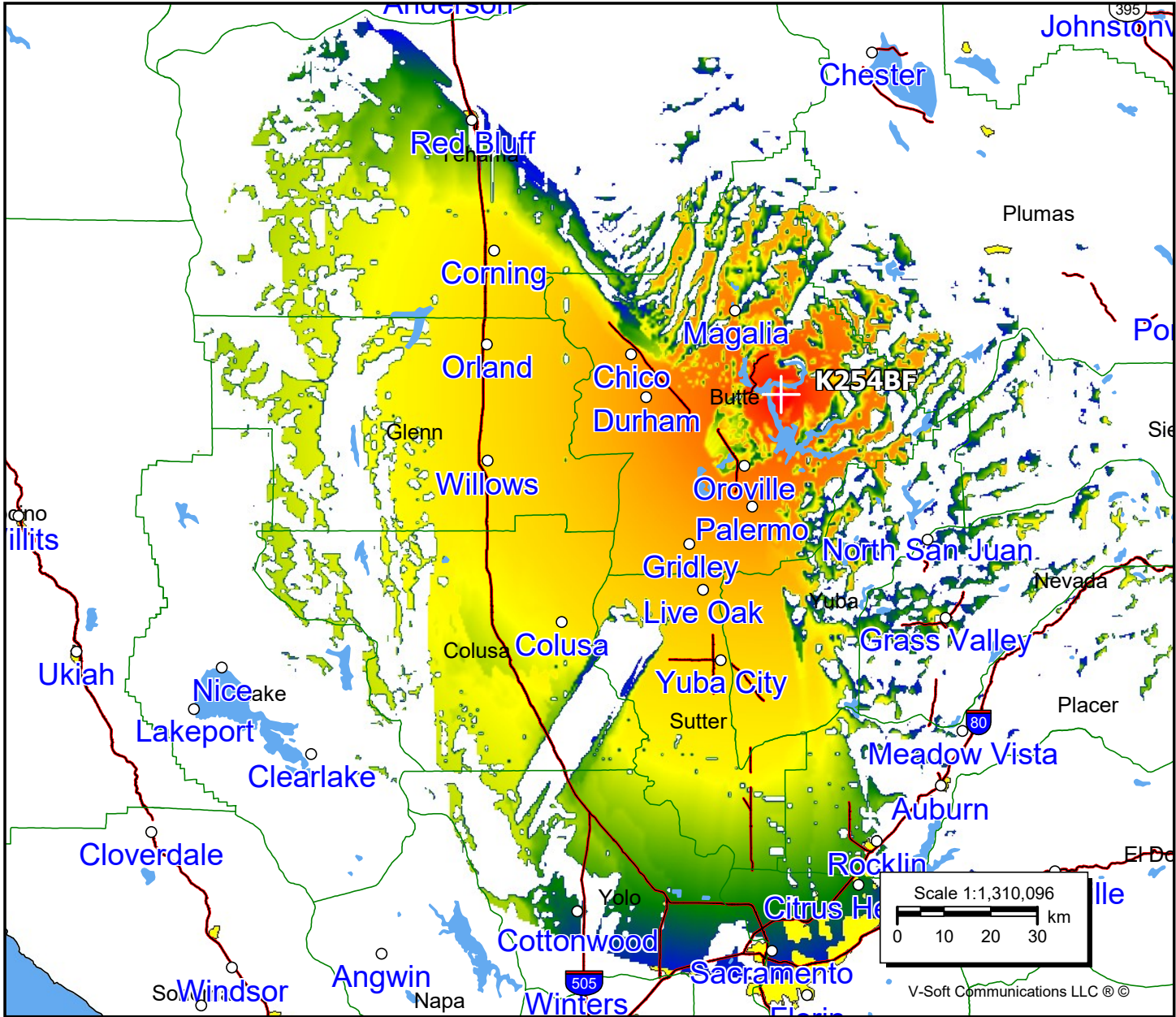


K254BF, Oroville, CA FAC# 92350
February 7, 2023

K254BF
 BLFT20181025AAS
 Latitude: 39-39-03.60 N
 Longitude: 121-27-48.90 W
 ERP: 0.01 kW
 Channel: 254
 Frequency: 98.7 MHz
 AMSL Height: 935.0 m
 Elevation: 901.0 m
 Horiz. Pattern: Omni
 Vert. Pattern: No
 Prop Model: Longley-Rice
 Climate: Cont temperate
 Conductivity: 0.0050
 Dielec Const: 15.0
 Refractivity: 311.0
 Receiver Ht AG: 2.0 m
 Receiver Gain: 0 dB
 Time Variability: 50.0%
 Sit. Variability: 50.0%
 ITM Mode: Broadcast



Population	
60 dBμ	28,293
54 dBμ	123,824
48 dBμ	382,496



V-Soft Communications LLC ©