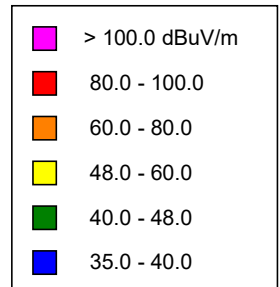


K266BI, Polson, MT FAC# 93878

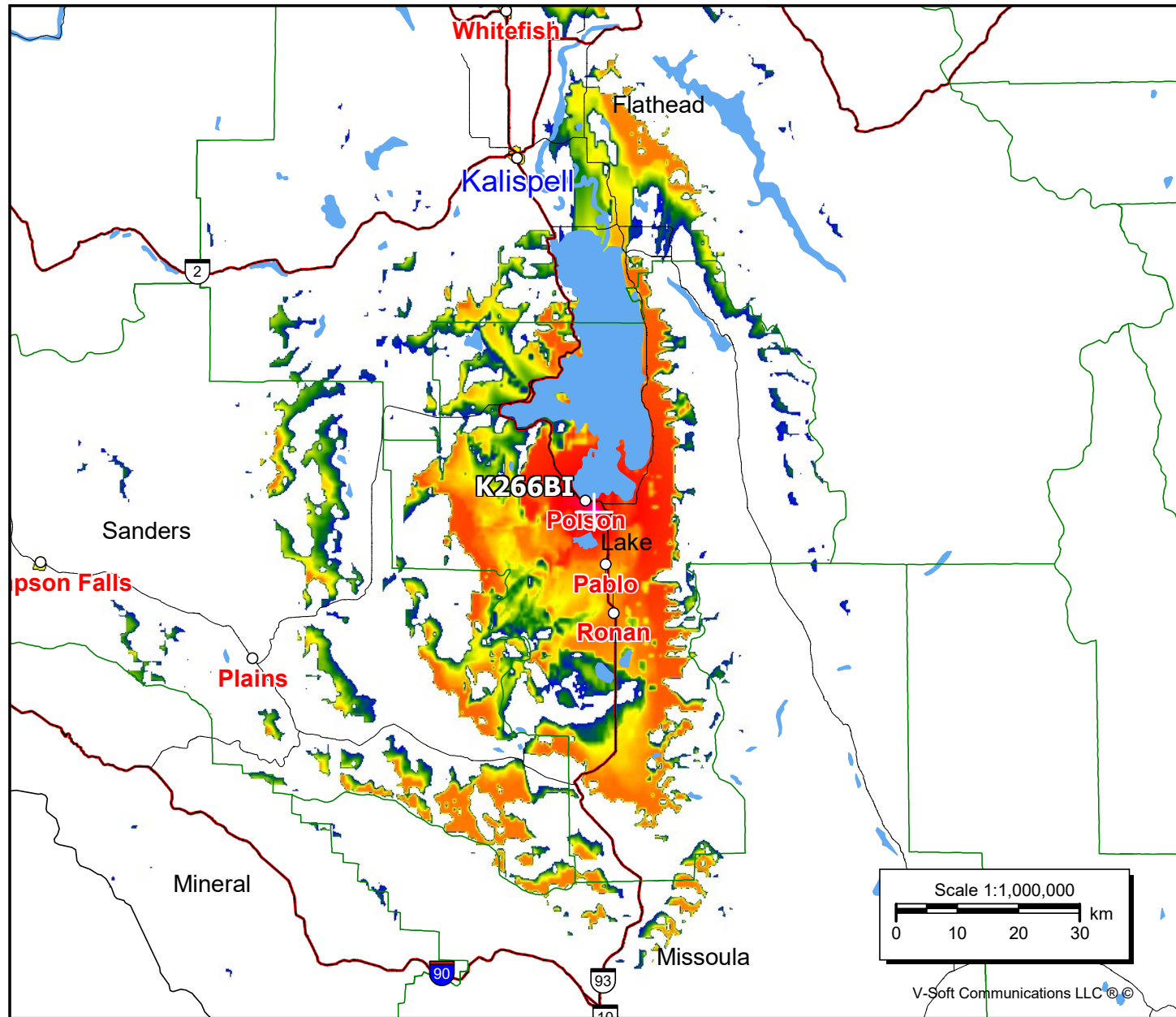
February 14, 2023

K266BI

BLFT20090626ABD
Latitude: 47-40-36.80 N
Longitude: 114-08-36.40 W
ERP: 0.075 kW
Channel: 266
Frequency: 101.1 MHz
AMSL Height: 1059.0 m
Elevation: 1036.0 m
Horiz. Pattern: Omni
Vert. Pattern: No
Prop Model: Longley-Rice
Climate: Cont temperate
Conductivity: 0.0050
Dielec Const: 15.0
Refractivity: 311.0
Receiver Ht AG: 2.0 m
Receiver Gain: 0 dB
Time Variability: 50.0%
Sit. Variability: 50.0%
ITM Mode: Broadcast



| Population | |
|-------------|--------|
| 60 dB μ | 14,055 |
| 54 dB μ | 22,258 |
| 48 dB μ | 27,365 |



V-Soft Communications LLC ©