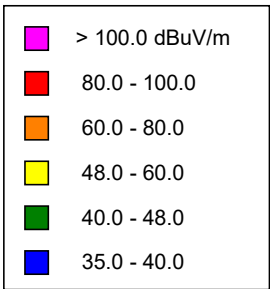
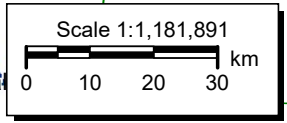
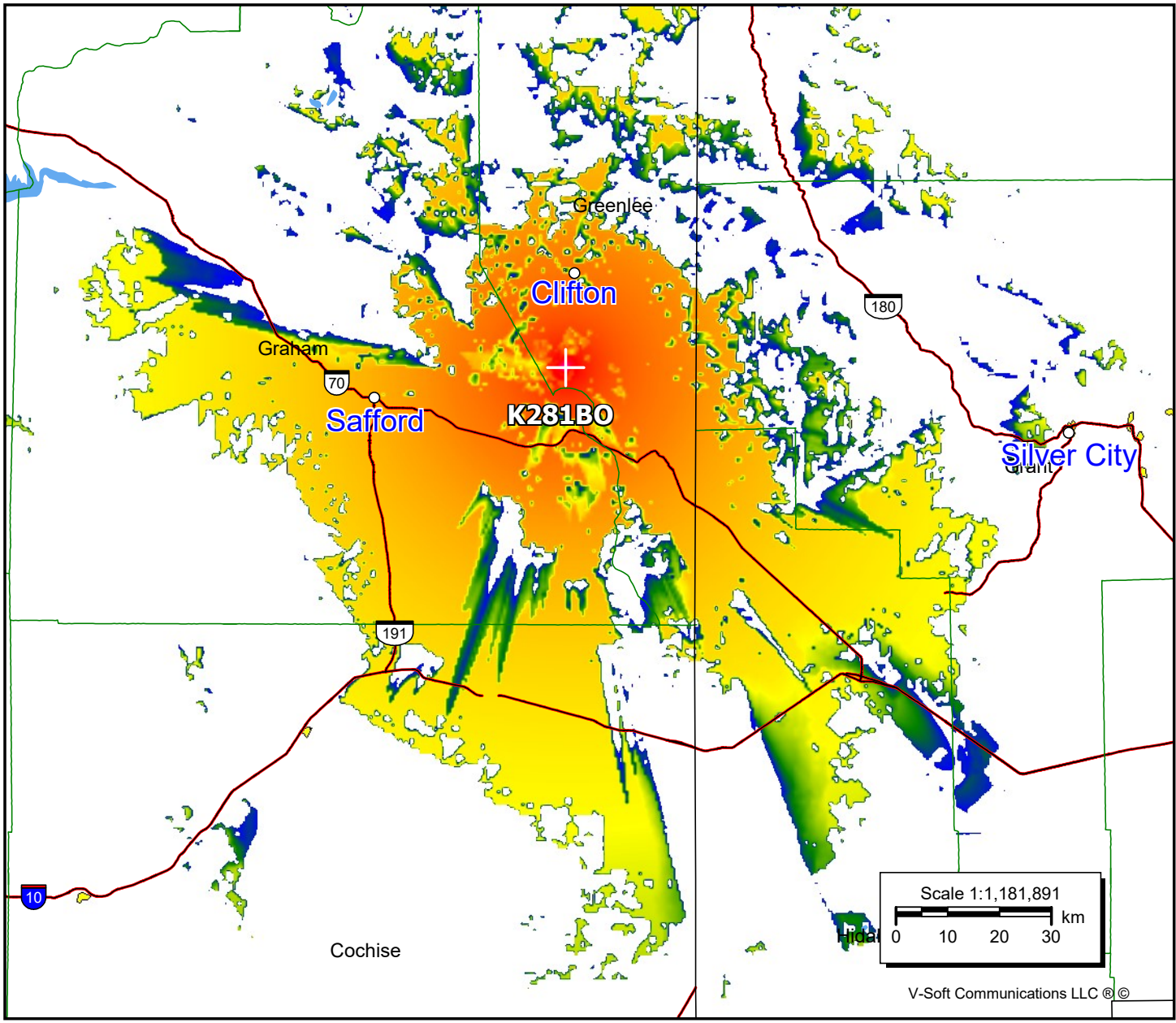


K281BO, Clifton, AZ FAC# 92863
February 2, 2023

K281BO
 BLFT20120112AEF
 Latitude: 32-53-14.20 N
 Longitude: 109-18-50.20 W
 ERP: 0.01 kW
 Channel: 281
 Frequency: 104.1 MHz
 AMSL Height: 2025.0 m
 Elevation: 2003.0 m
 Horiz. Pattern: Omni
 Vert. Pattern: No
 Prop Model: Longley-Rice
 Climate: Cont temperate
 Conductivity: 0.0050
 Dielec Const: 15.0
 Refractivity: 311.0
 Receiver Ht AG: 2.0 m
 Receiver Gain: 0 dB
 Time Variability: 50.0%
 Sit. Variability: 50.0%
 ITM Mode: Broadcast



Population	
60 dBμ	7,274
54 dBμ	36,698
48 dBμ	42,611



V-Soft Communications LLC ©