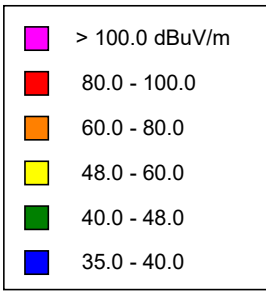
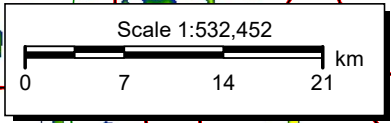
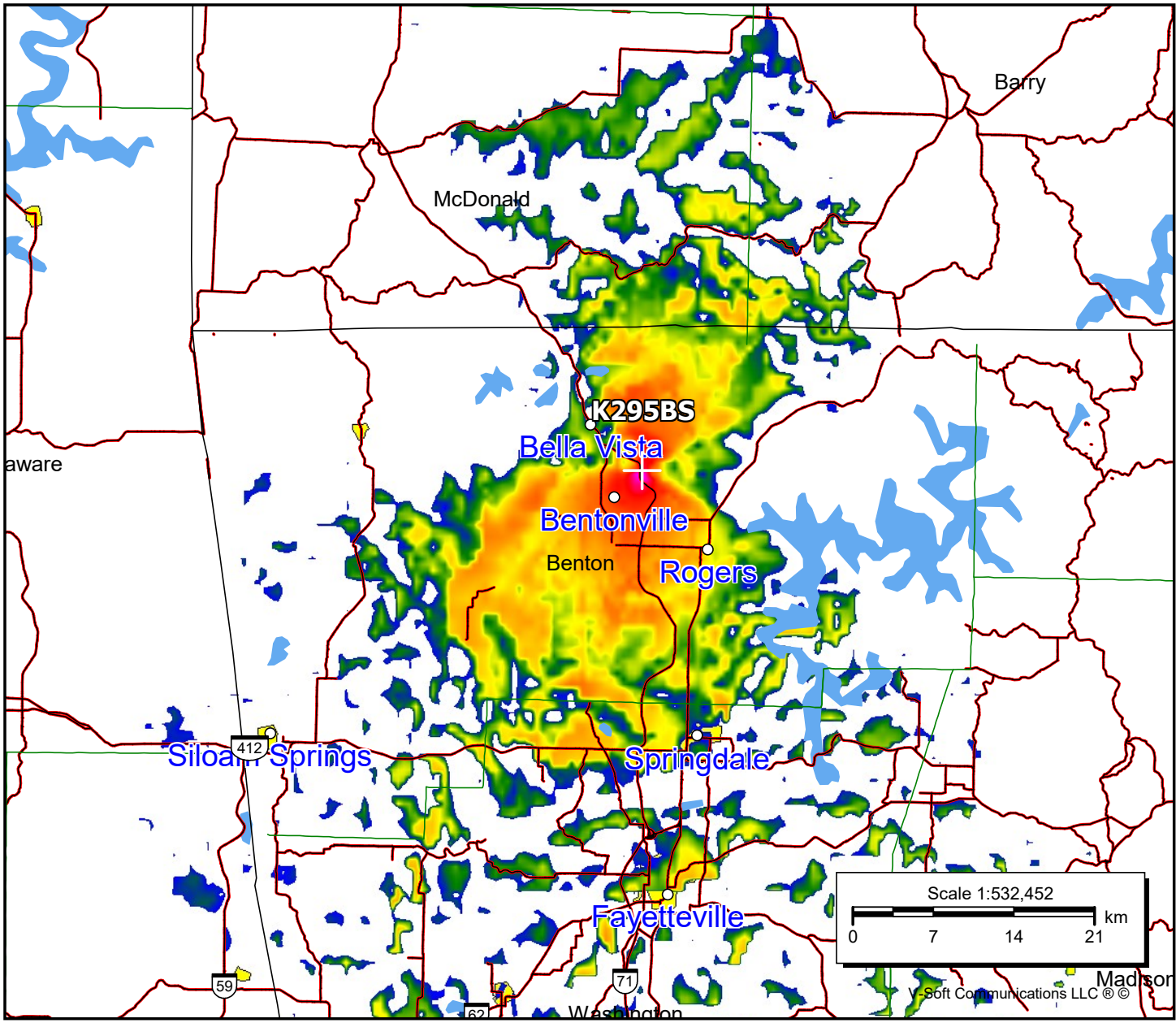


**K295BS, Bentonville, AR FAC# 92678**  
**February 3, 2023**

**K295BS**  
 BLFT20120807ABL  
 Latitude: 36-23-37.30 N  
 Longitude: 094-10-53.70 W  
 ERP: 0.14 kW  
 Channel: 295  
 Frequency: 106.9 MHz  
 AMSL Height: 416.0 m  
 Elevation: 386.0 m  
 Horiz. Pattern: Directional  
 Vert. Pattern: No  
 Prop Model: Longley-Rice  
 Climate: Cont temperate  
 Conductivity: 0.0050  
 Dielec Const: 15.0  
 Refractivity: 311.0  
 Receiver Ht AG: 2.0 m  
 Receiver Gain: 0 dB  
 Time Variability: 50.0%  
 Sit. Variability: 50.0%  
 ITM Mode: Broadcast



Population	
60 dB $\mu$	41,405
54 dB $\mu$	110,074
48 dB $\mu$	178,061



Madison  
 Soft Communications LLC ©