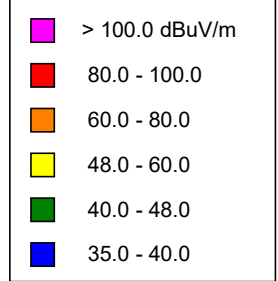


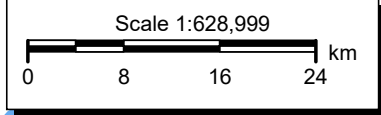
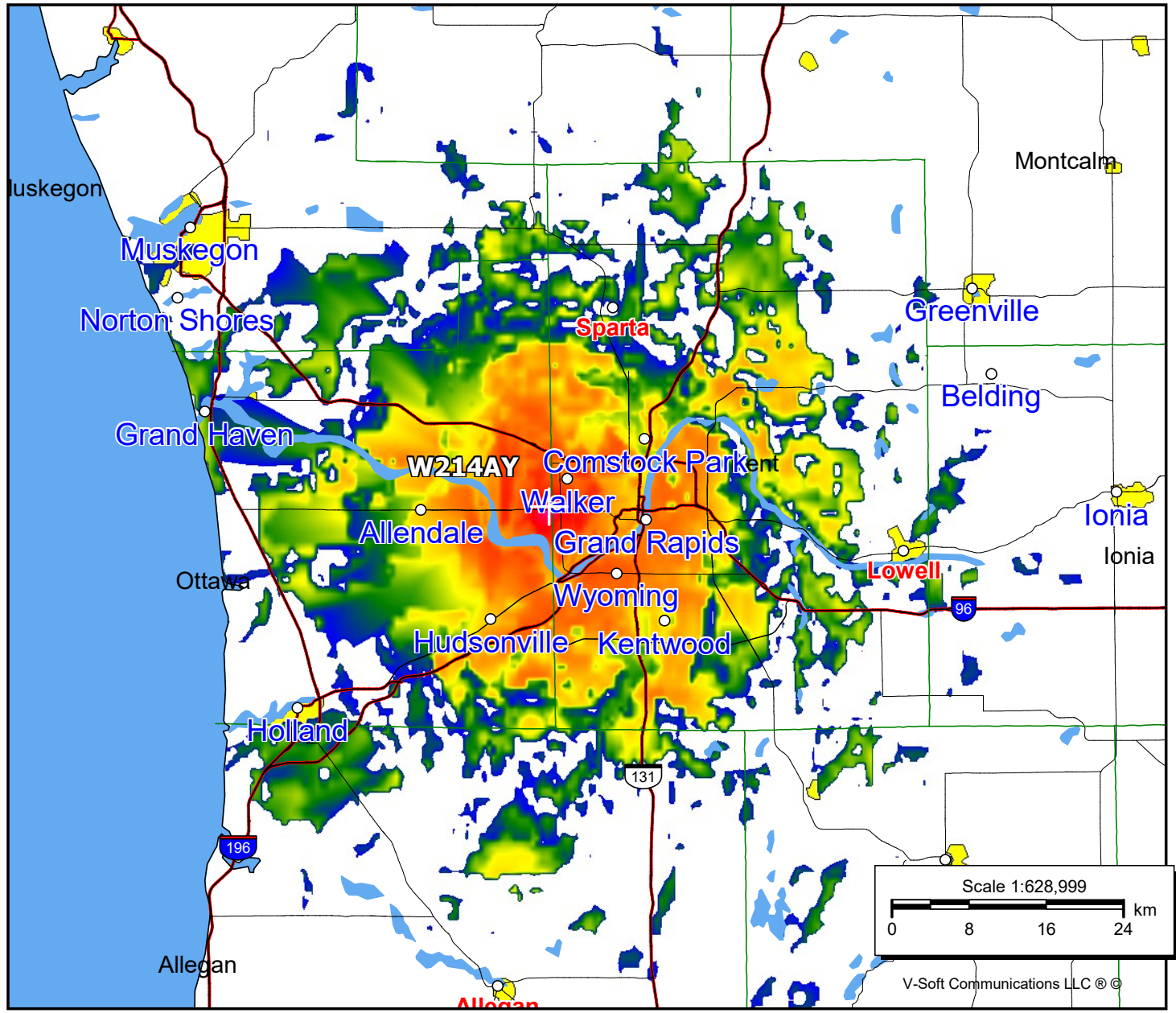
**W214AY, Walker, MI FAC# 89602**  
**February 13, 2023**

**W214AY**

BLFT20140328ADL  
 Latitude: 42-58-32.10 N  
 Longitude: 085-47-28.10 W  
 ERP: 0.013 kW  
 Channel: 214  
 Frequency: 90.7 MHz  
 AMSL Height: 326.0 m  
 Elevation: 229.0 m  
 Horiz. Pattern: Omni  
 Vert. Pattern: No  
 Prop Model: Longley-Rice  
 Climate: Cont temperate  
 Conductivity: 0.0050  
 Dielec Const: 15.0  
 Refractivity: 311.0  
 Receiver Ht AG: 2.0 m  
 Receiver Gain: 0 dB  
 Time Variability: 50.0%  
 Sit. Variability: 50.0%  
 ITM Mode: Broadcast



Population	
60 dB $\mu$	233,143
54 dB $\mu$	419,993
48 dB $\mu$	546,240



V-Soft Communications LLC ©