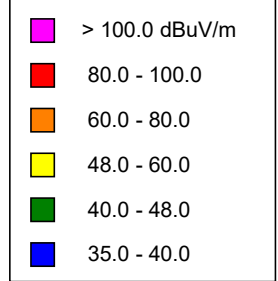


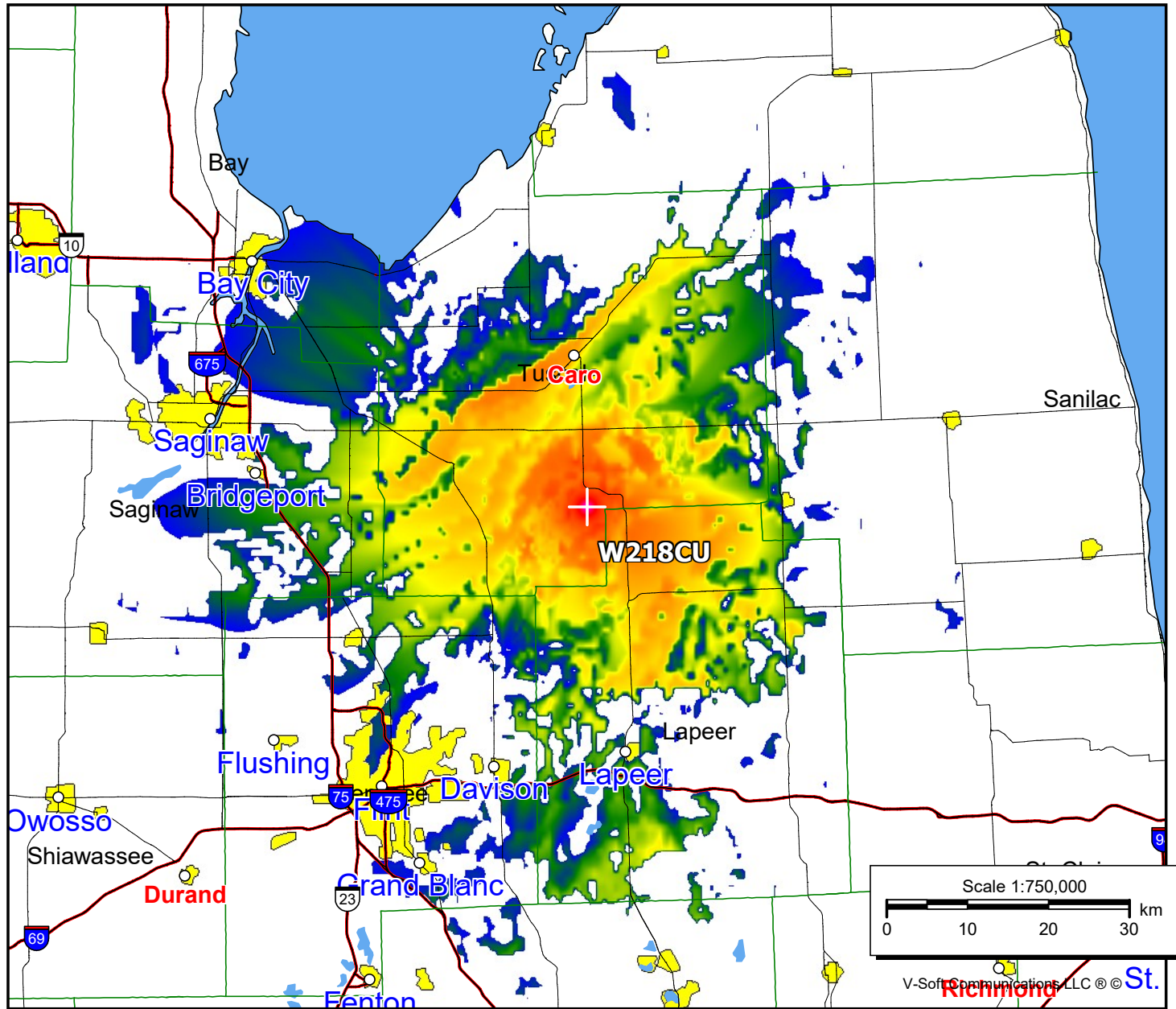
W218CU, Caro, MI FAC# 91309
February 13, 2023

W218CU

BLFT20130611ABR
 Latitude: 43-19-23.10 N
 Longitude: 083-22-36.80 W
 ERP: 0.013 kW
 Channel: 218
 Frequency: 91.5 MHz
 AMSL Height: 349.0 m
 Elevation: 291.0 m
 Horiz. Pattern: Omni
 Vert. Pattern: No
 Prop Model: Longley-Rice
 Climate: Cont temperate
 Conductivity: 0.0050
 Dielec Const: 15.0
 Refractivity: 311.0
 Receiver Ht AG: 2.0 m
 Receiver Gain: 0 dB
 Time Variability: 50.0%
 Sit. Variability: 50.0%
 ITM Mode: Broadcast



Population	
60 dBμ	4,599
54 dBμ	17,706
48 dBμ	40,822



V-Soft Communications, LLC © St. Richmond