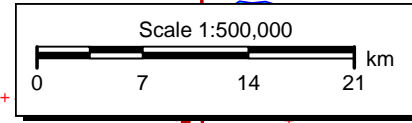
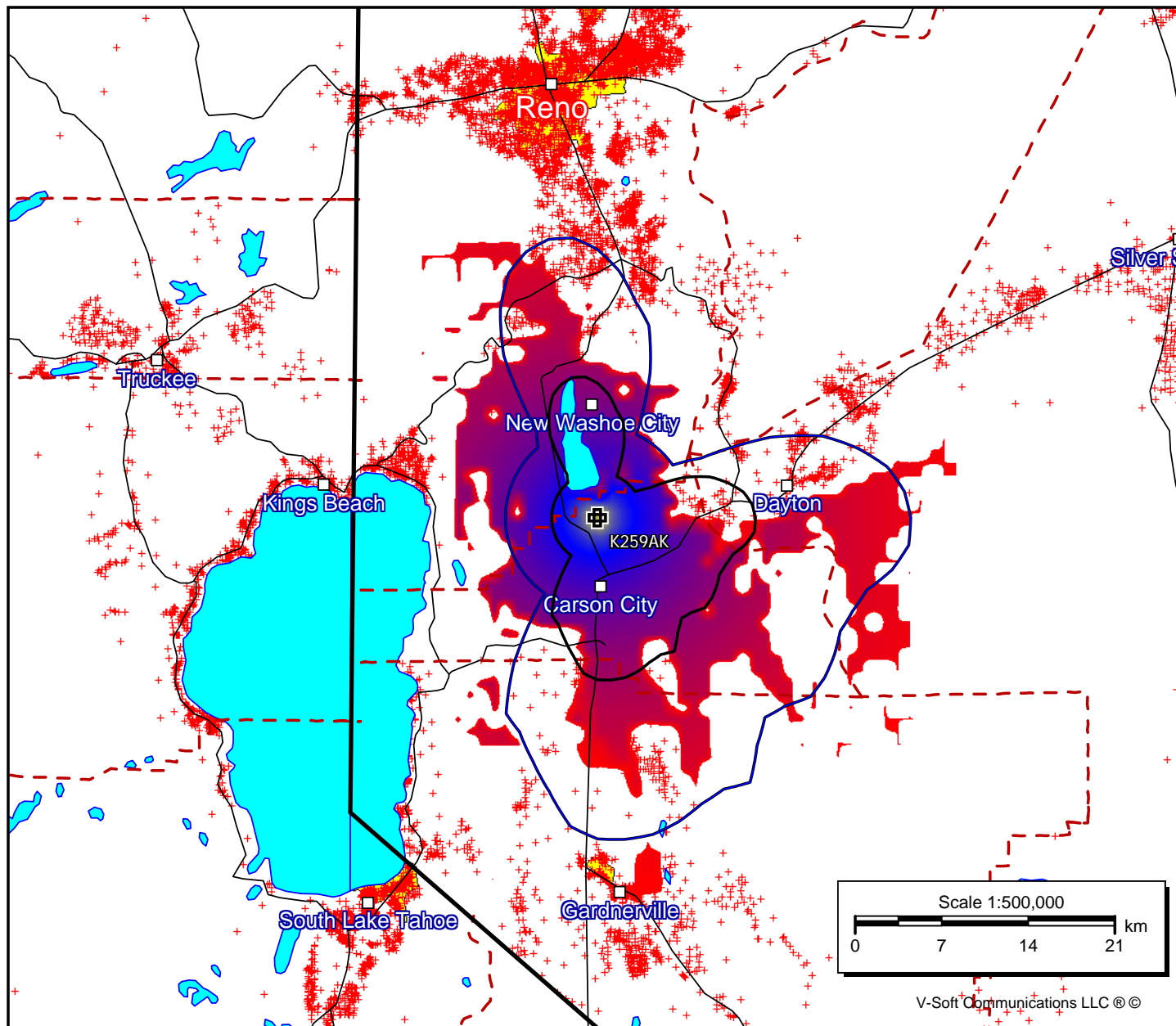
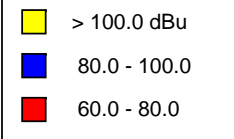


K259AK
 BMLFT20110928AKO
 Latitude: 39-12-50 N
 Longitude: 119-46-10 W
 ERP: 0.019 kW
 Channel: 259
 Frequency: 99.7 MHz
 AMSL Height: 1830.0 m
 Elevation: 1808.0 m
 Horiz. Pattern: Omni
 Vert. Pattern: No
 Prop Model: Longley-Rice
 Climate: Cont temperate
 Conductivity: 0.0050
 Dielec Const: 15.0
 Refractivity: 311.0
 Receiver Ht AG: 10.0 m
 Receiver Gain: 0 dB
 Time Variability: 50.0%
 Sit. Variability: 50.0%
 ITM Mode: Broadcast



V-Soft Communications LLC ©