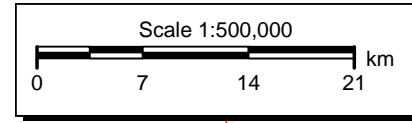
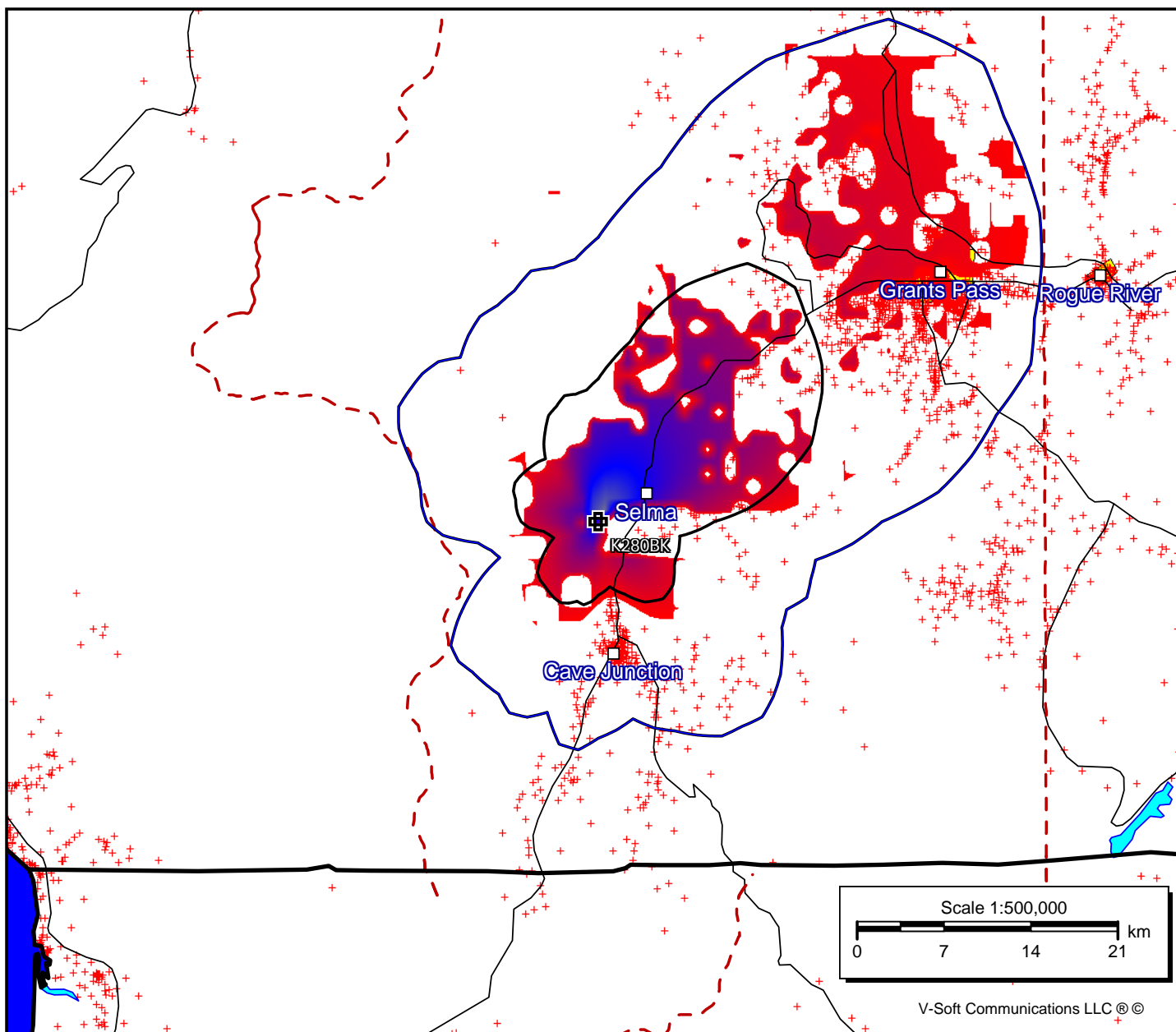


**K280BK**

BMLFT20100709A11  
Latitude: 42-15-31 N  
Longitude: 123-39-43 W  
ERP: 0.052 kW  
Channel: 280  
Frequency: 103.9 MHz  
AMSL Height: 1228.0 m  
Elevation: 1207.0 m  
Horiz. Pattern: Directional  
Vert. Pattern: No  
Prop Model: Longley-Rice  
Climate: Cont temperate  
Conductivity: 0.0050  
Dielec Const: 15.0  
Refractivity: 311.0  
Receiver Ht AG: 10.0 m  
Receiver Gain: 0 dB  
Time Variability: 50.0%  
Sit. Variability: 50.0%  
ITM Mode: Broadcast

- > 100.0 dBu
- 80.0 - 100.0
- 60.0 - 80.0



V-Soft Communications LLC ©